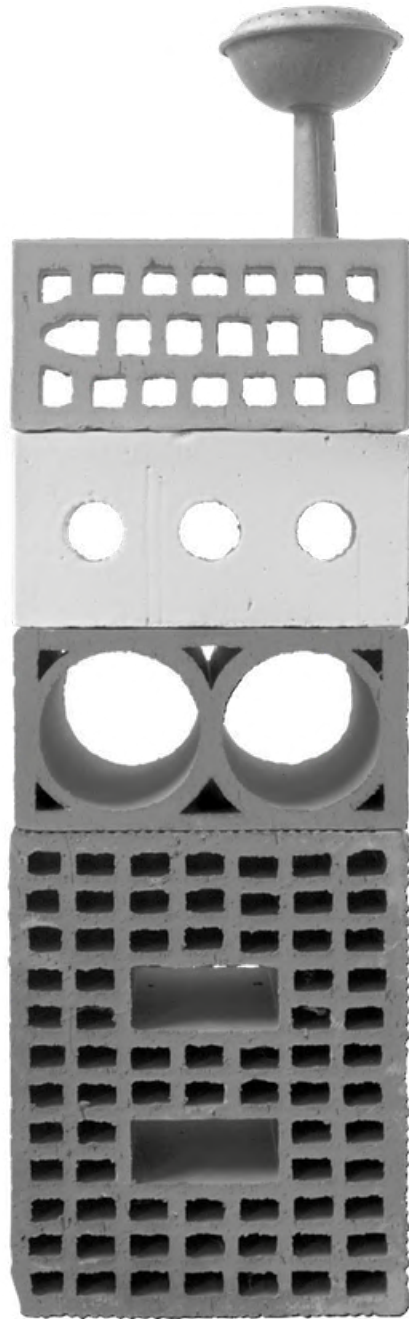


MATTONELLE MARGHERITA COLLECTION

With Mattonelle Margherita, Mutina has worked with colour, along with the artist Nathalie Du Pasquier, creating a complex project featuring a blend of different aesthetic and formal means of expression. The collection is characterised by a dual concept: on the one hand, a simple, minimalist style, evident in the plain-coloured elements, and on the other, a courageous, creative approach, characterised by a large variety of graphics. In total it is composed of 41 patterns designed by hand, available in two sizes.

An encounter

A conversation between Massimo Orsini & Nathalie Du Pasquier



“After many years, the encounter with Mutina allowed me to work on a design project again. I had forgotten how funny that could be. Mutina has the size that I like, we talk to each other and decide in the moment, then we go in the trattoria.”

Nathalie Du Pasquier



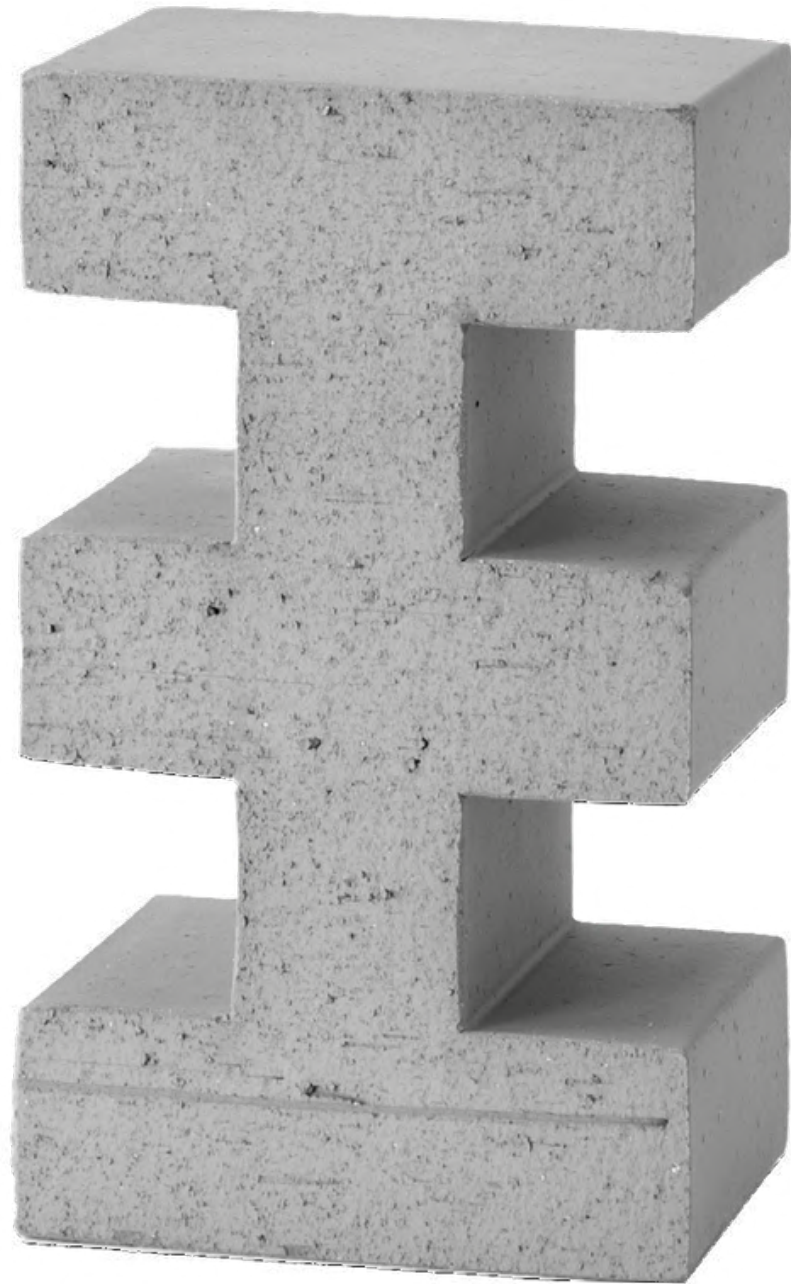
MO: The two of us met for the first time at MiArt in 2014. Since then I've followed your work and your story closely, because I found them fascinating. Then Sarah Cosulich, Mutina for Art curator and I decided to contact you, and it was a splendid experience. It was a challenging period for you, but we were really keen to work with you.

NDP: It's true that I had a lot of things to do, but when a stimulating proposal is made to me, I never turn it down. And since I've always loved ceramics and I've always done all sorts of things with bricks, I thought I'd enjoy building something with those elements. I immediately came up with an idea: to build a sort of little house made with glazed bricks, and then to set up an exhibition inside it, with paintings or drawings. Then things changed and we made all these little monuments instead.



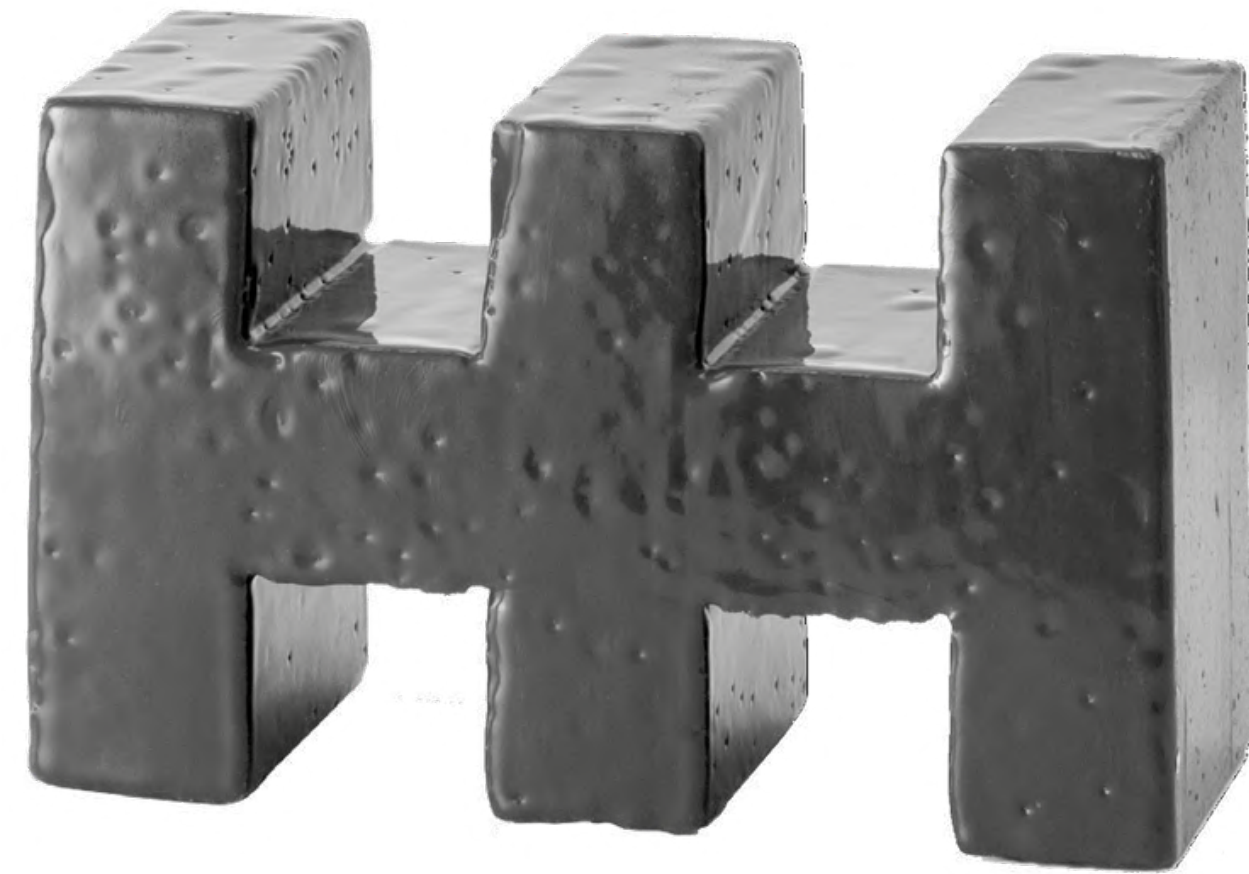
NDP: The best moment was when I came to see the towers after they'd been assembled, and there was something that wasn't right. I said, "You know, Massimo, it would look great with some sand on the ground". And that's the great thing about Mutina: in an hour, you'd already called someone who had gone to get some samples, and came back with two buckets filled with two different types of sand. That made a big difference to the exhibition, because at this point they looked rather like archaeological ruins.

BRAC by Nathalie Du Pasquier



MO: We enjoyed working with you so much that we haven't let you go since. So we decided to go back to one of the bricks designed at the beginning, and turn it into a collection: BRAC.

NDP: Used for creating dividing walls, a sort of mashrabiya made of bricks.

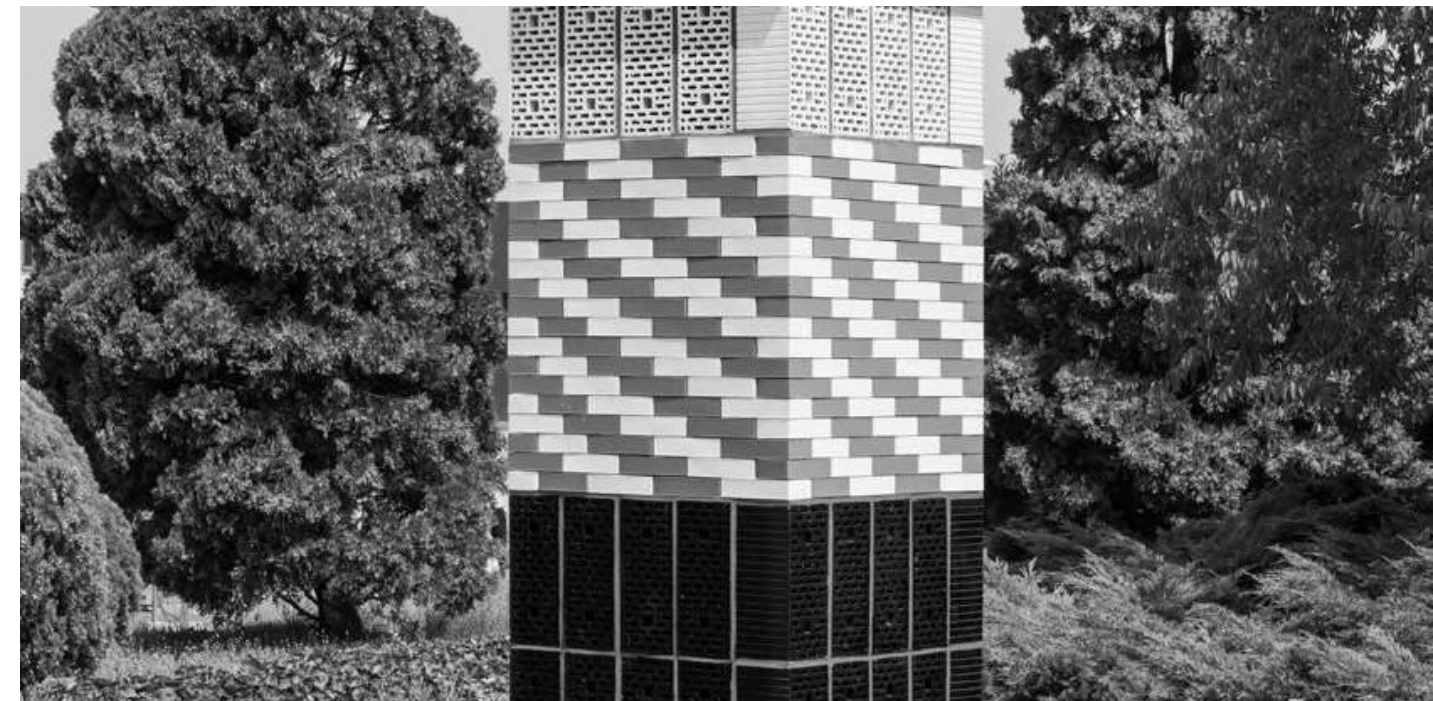


“L’incontro con Mutina mi ha permesso dopo tanti anni, di pensare di nuovo a un progetto di design. Avevo dimenticato come può essere divertente. Mutina ha la dimensione che mi piace, parliamo tra di noi e decidiamo al momento, poi andiamo in trattoria”.

Nathalie Du Pasquier

MO: BRIC exhibition appealed so much to so many people, in particular to gallery owners, who asked us to create an edition of the towers. The first edition of Torri is, of course, in the Mutina garden; it’s changed a lot, and people notice this new element.

NDP: They interact effectively, because they’re creatures of Mutina, but there’s no formal link. We decided to put them in front, because they’re cheerful signs, and they look good, but they would never have been created without the first installation, which I’m very attached to.



MO: Above all, the great thing is that everything happened between us absolutely spontaneously, creating a continuum that lead to the creation of Mattonelle Margherita. I'd been saying for a while that I wanted to call you with a proposal to create a collection, and after you accepted, it was truly magical, because the idea was ready in ten days.

“Mattonelle Margherita is meant for everyone. Mattonelle Margherita requires creativity. Mattonelle Margherita is meant for the fearless ones.”

Nathalie Du Pasquier



NDP: Yes, it was all about coming up with an idea in the end. I used to work as a designer, although it was a long time ago. I love decorating, I love ceramics, and I'm a huge fan of tiles, so you didn't need to twist my arm! Once it was done, I realised it was very different from the other Mutina collections. I thought it wasn't so much a designer collection, it was more of a popular style. I have an incredibly nice concierge called Margherita, so I chose that name, also because it makes people think of the flower. It's a popular name, Margherita; I like it a lot. I think it works precisely because of the simplicity of this type of decorations. Sure, you can create a whole range of completely different things, very sophisticated things, but you can also create things that really are incredibly simple. And they don't really look like tiles designed by an architect.



Nathalie Du Pasquier's studio in Milan.



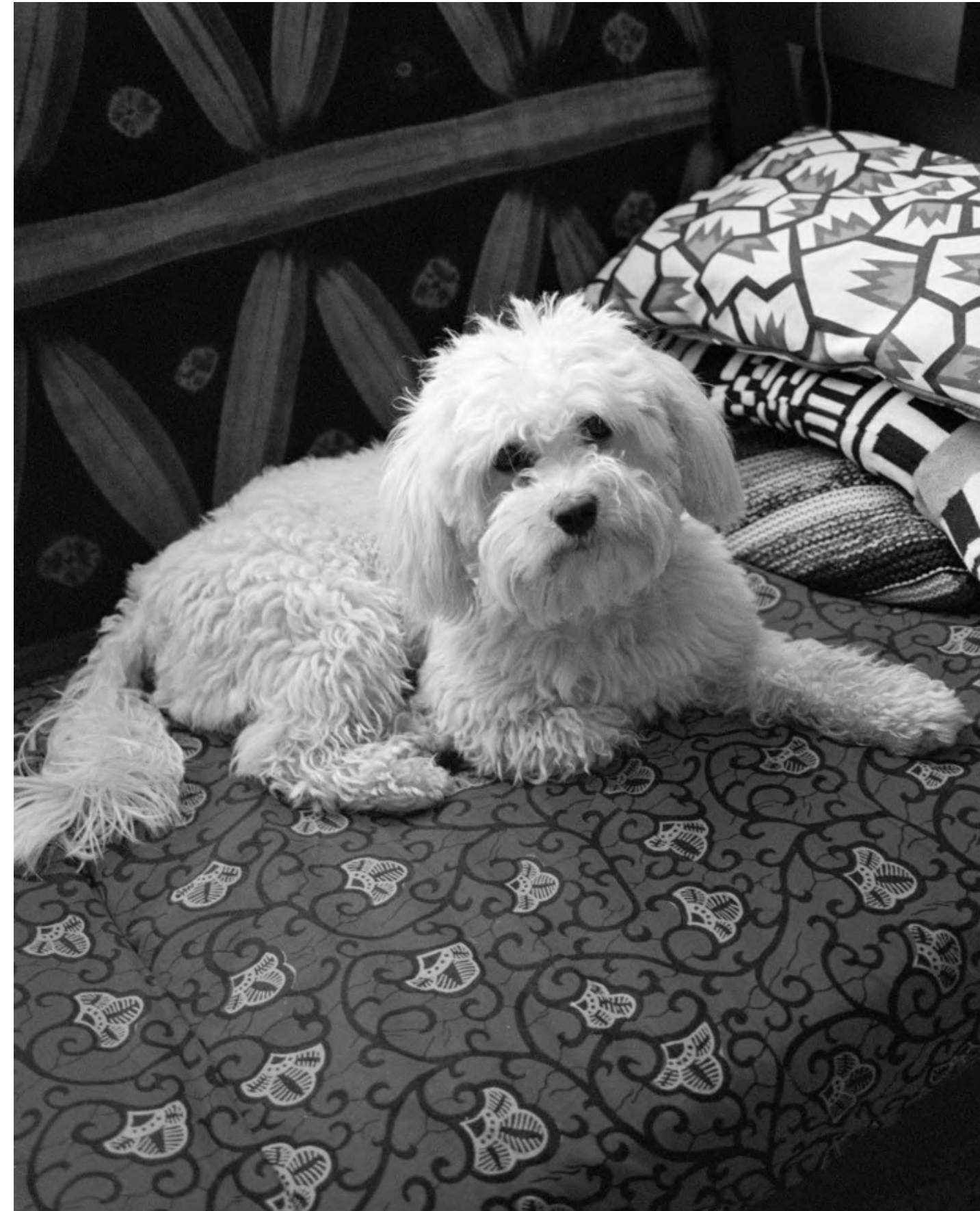
Prototypes on the floor at Nathalie's studio in Milan.

“Mattonelle Margherita va bene per tutti. Mattonelle Margherita richiede fantasia. Mattonelle Margherita è per quelli che non hanno paura”.

Nathalie Du Pasquier

MO: I think the great thing about Mattonelle Margherita is the fact it has different degrees of sophistication and application. It's incredible. As you say, you need courage, and a little imagination. Mattonelle Margherita offers superb project opportunities, mixing lots of patterns and doing those things we shouldn't be afraid of. At the same time, the expressive language is absolutely minimal. It's a whole world we're doing our best to illustrate effectively, because people need to understand that this is a project with more than one soul.

NDP: You can create a home for a madman. Think of a house covered in tiles throughout, with tiled floors and walls... it would be wonderful! I'd love to create a home like that, it would be fabulous. And at the same time, you can create a really simple floor, using just a decoration, or even just the diamond pattern. And then there's the skirting solution, midway between the madman's home and a home with a really simple decor. I believe this tile offers the opportunity to create a highly decorative, quite original detail. And it also looks good in small spaces, for example a toilet, a bathroom, a part of the kitchen, those places where tiles are normally used. But I believe these tiles in particular can be used in a slightly more radical way in these places, and this is also interesting. A bathroom featuring four different patterns, strong colours... It can be a lot of fun for an architect to play around with, using a little imagination.



Pango at Nathalie's studio.

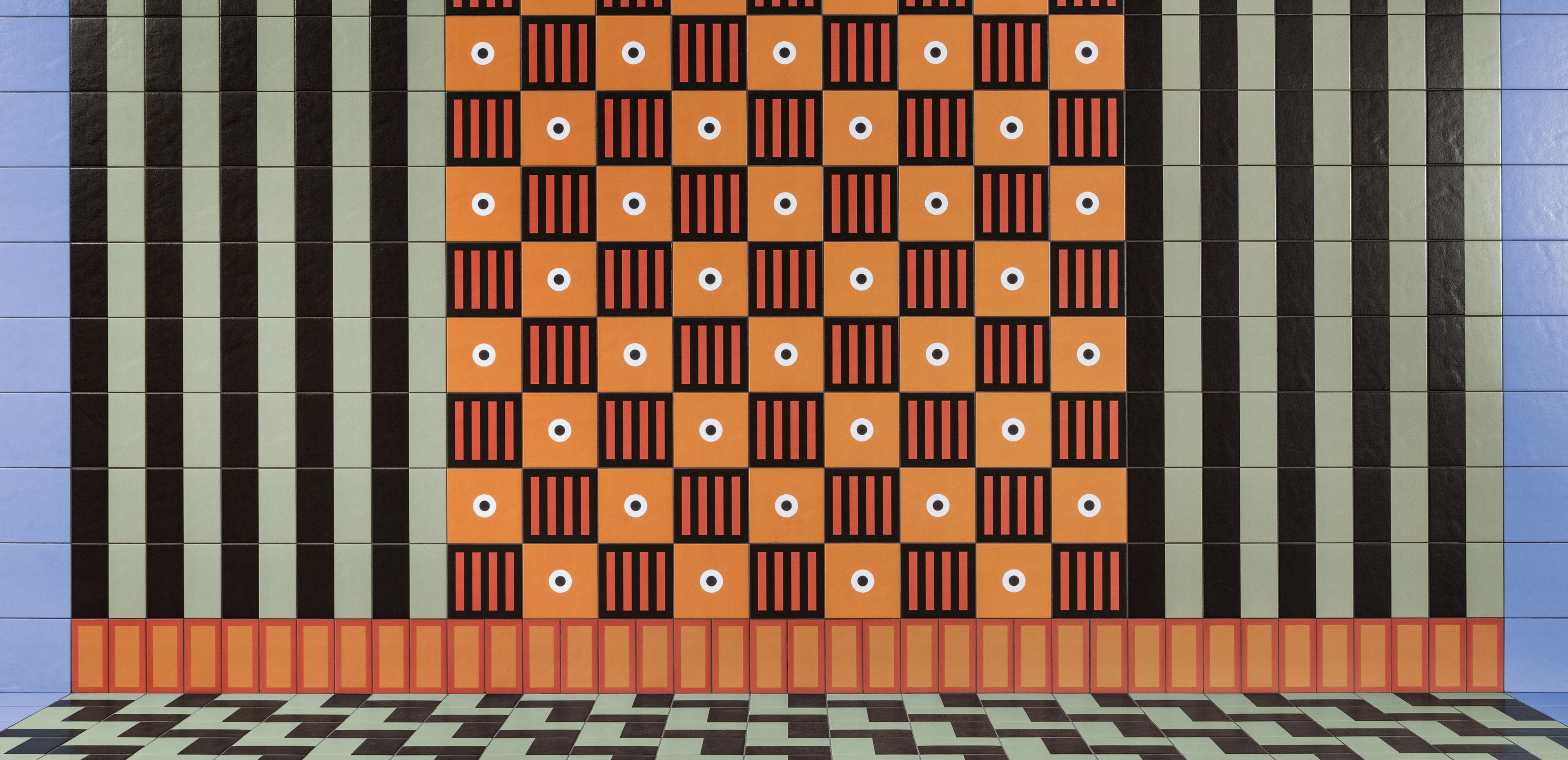
Mattonelle Margherita

With Mattonelle Margherita, Mutina has worked with colour, along with the artist Nathalie Du Pasquier, creating a complex project featuring a blend of different aesthetic and formal means of expression. The collection is characterised by a dual concept: on the one hand, a simple, minimalist style, evident in the plain-coloured elements, and on the other, a courageous, creative approach, characterised by a large variety of graphics. In total it is composed of 41 patterns designed by hand, available in two sizes.

The elements are created in glazed porcelain stone-ware, with a traditional industrial production method of the kind used in the past. To obtain the best possible result in terms of finish and colour, careful research has gone into the glazes, in order to identify the most reactive, so as to give a bright, vibrant finish to the satin-effect surface. The combination of pure white glazes and transparent, waxy glazes, applied in abundance, guarantees a natural-looking surface, on which colour is absorbed, maximising its effect.

“A slightly futuristic dinette, but still a dinette. These tiles look great paired with a gleaming white gas cooker, your aunt’s cupboard, but also with an induction hob and remote-controlled cabinets. Actually, it is the perfect collection for tiny spaces, with floors, mouldings and walls entirely covered in different graphics; or a full wall in an American-looking kitchen; or even as an edged floor in the living room of a summer house, with a 60-inch television. It’s perfect for walking barefoot inside a beautiful Sicilian villa, but also in slippers on the tenth floor of a building in Cinisello Balsamo. The pieces in Mattonelle Margherita can be combined in so many ways, just like old-fashioned ceramics, but they are also extremely contemporary, without heeding passing fashions.”

Nathalie Du Pasquier



Wall: Marghe Light Blue, Black Green, Point, Stripes, Frame Terracotta.
Floor: Black Green, Marghe Light Blue.

LEGGERE



Wall: Marghe Half Black, Street, Flower Black, Rhombus Black.
Floor: Square black. Margherita Paint: Azzurro Matt.



Wall: Double Red, Marghe Black.
Floor: Black Terracotta. Margherita
Paint: Verde Matt.

AMARE

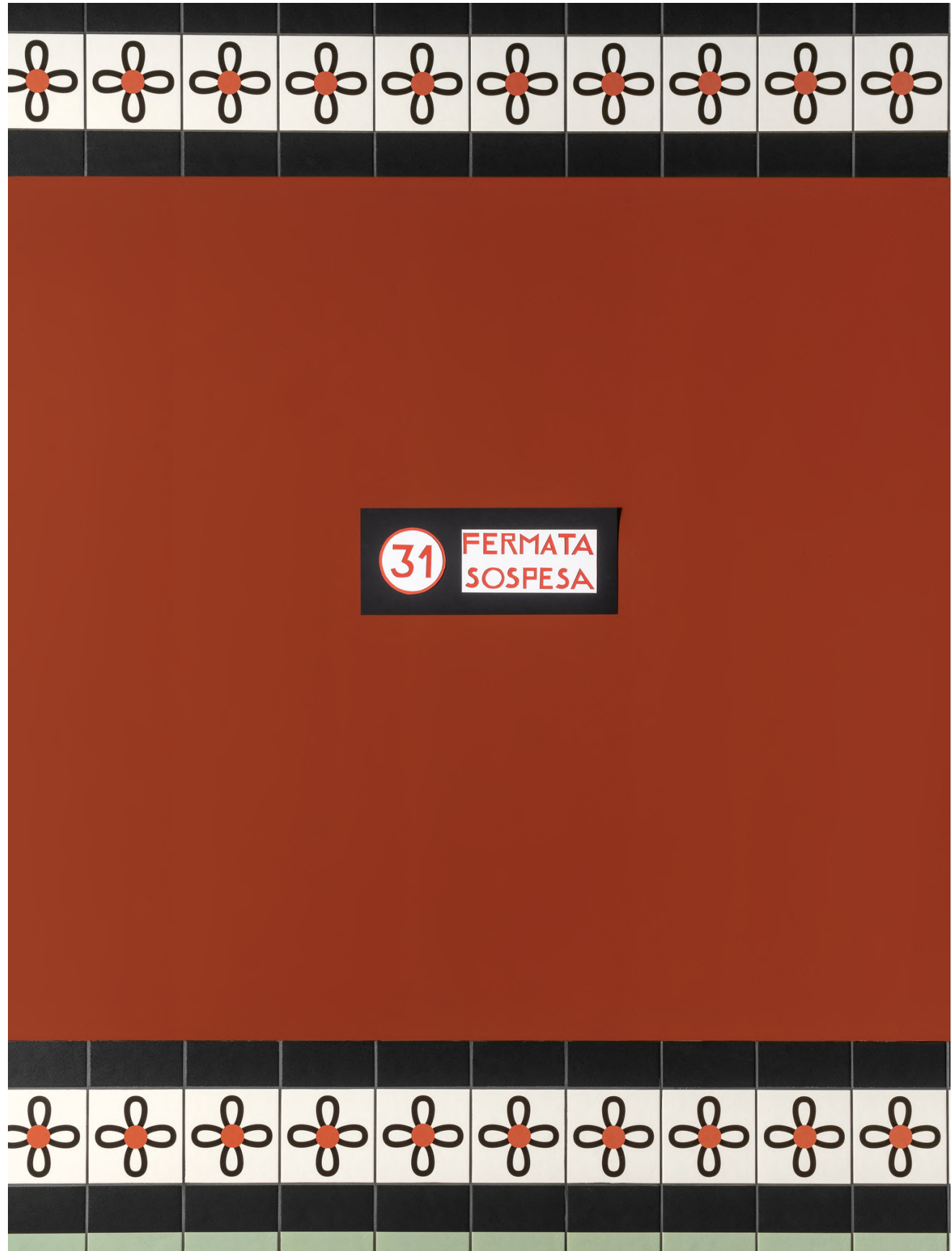
Marghe Half Black, Parallel
Black, Wires.
Margherita Paint: Rosa Matt.



AMARE



Wall: Marghe Half Black, Parallel Black, Wires. Floor: Marghe Half Black, Street, Marghe Green. Margherita Paint: Rosa Matt.



Marghe Half Black, Petals, Black Green.
Accents Paint: Oxide Matt.



Marghe Black, Marghe Light Blue.
Margherita Paint: Giallo Matt.



PENSARE

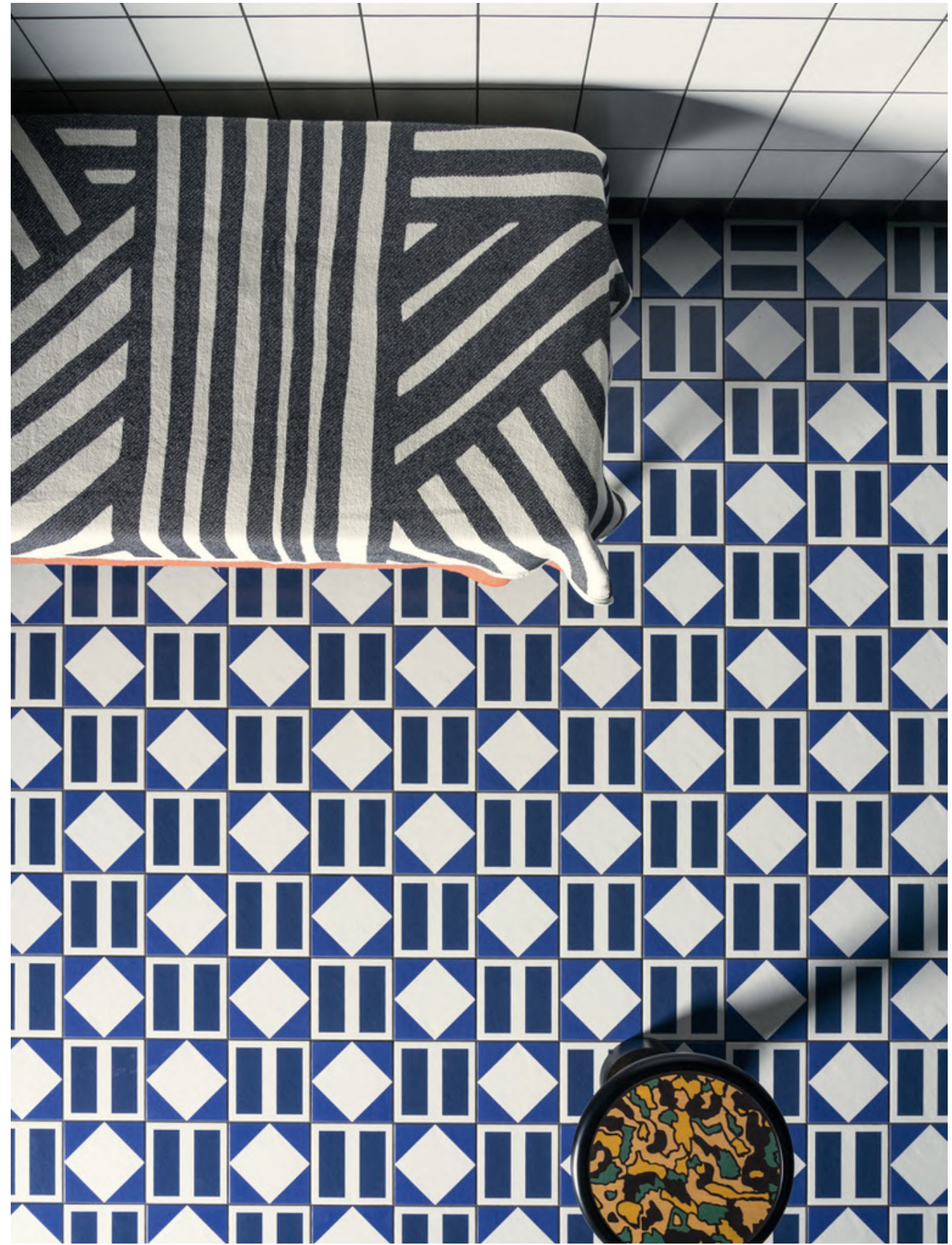
S M E G



Wall: Marghe Black, Marghe Light Blue. Floor: Marghe Half Black, Street, Spring Terracotta. Margherita Paint: Giallo Matt.

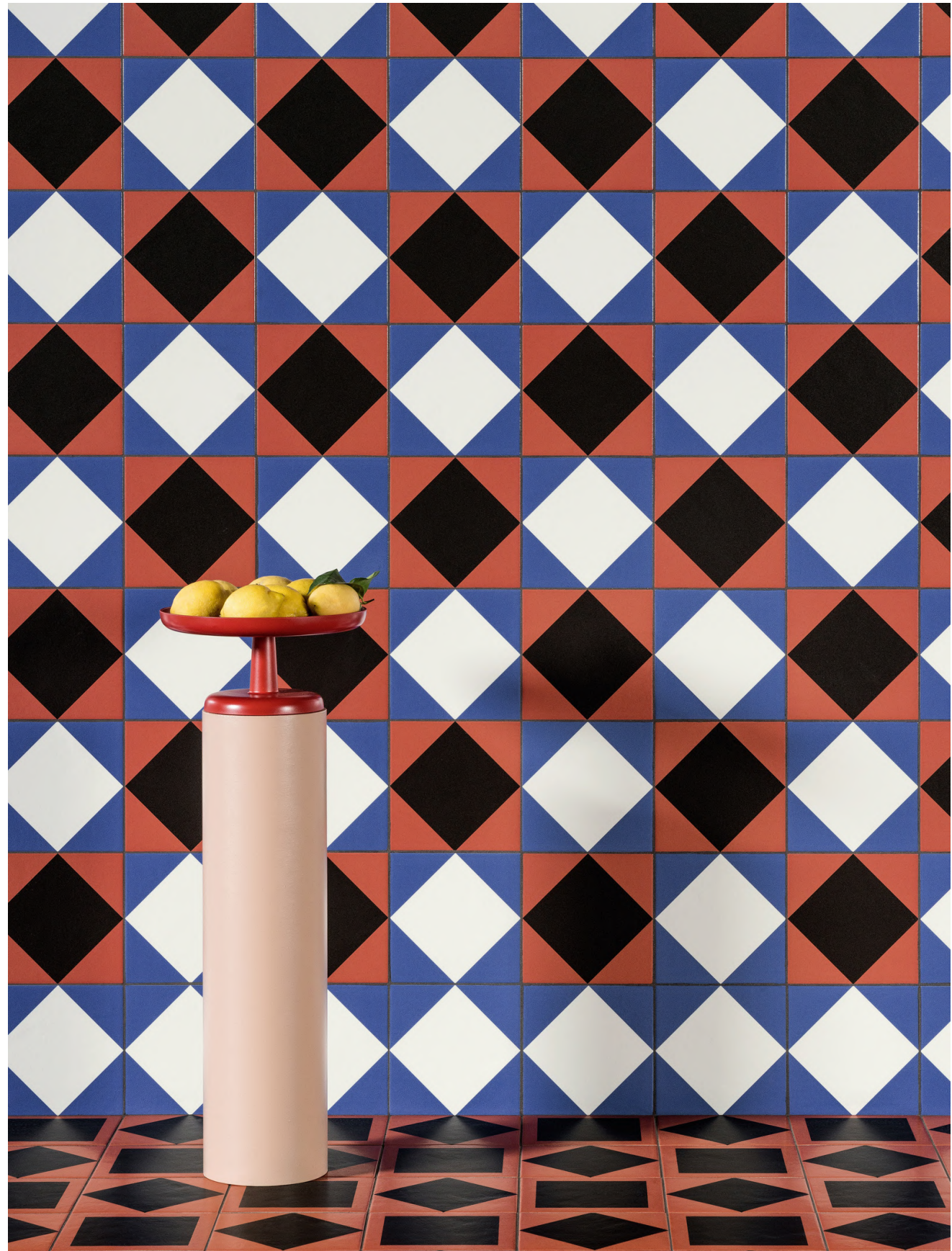


Wall: Marghe White, Marghe Half Black.
Floor: Rhombus White, Double Blue.

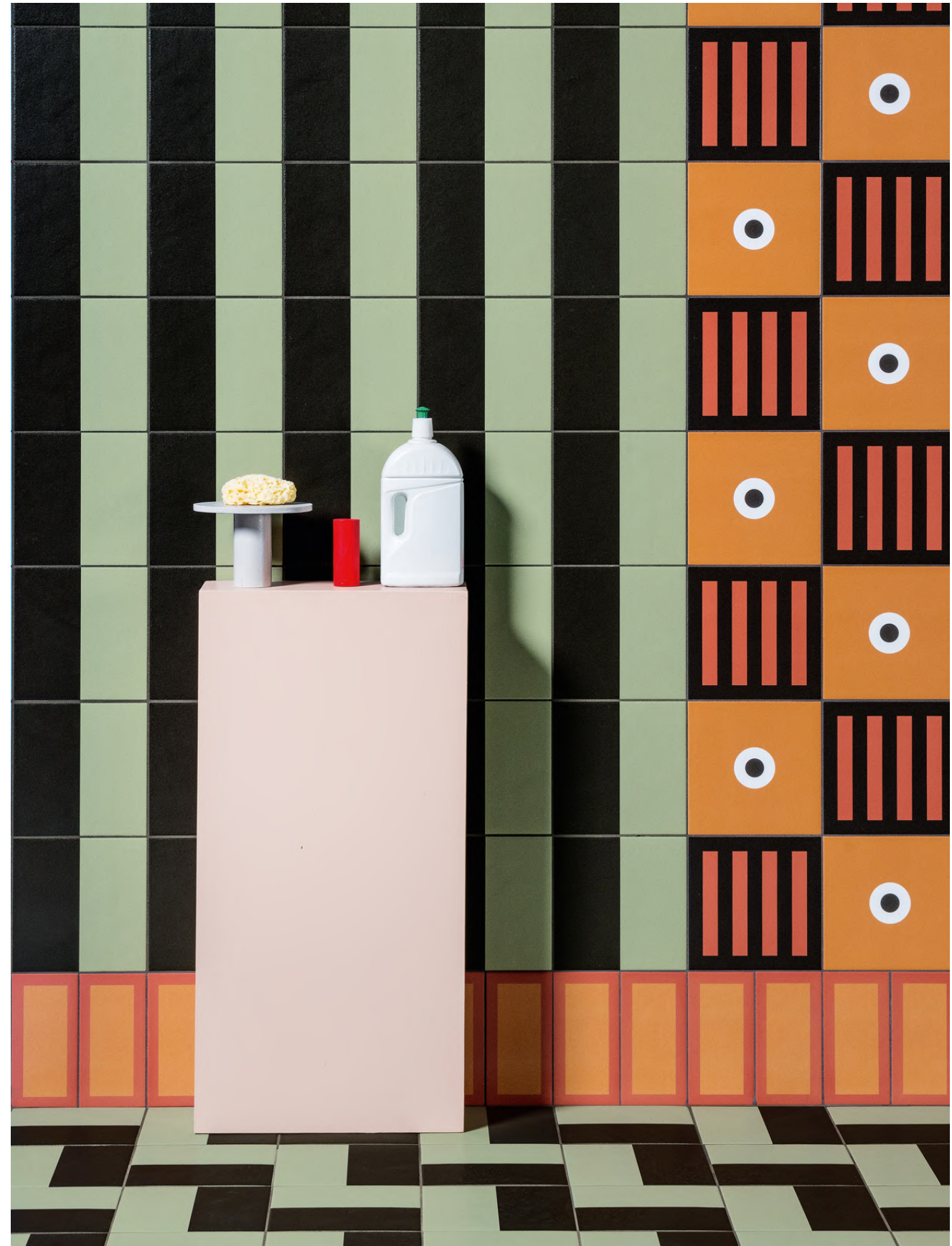


Wall: Marghe Half Black, Street,
Marghe Blue, Parallel Black.
Floor: Square Blue. Accents
Paint: Clay Matt.





Wall: Rhombus White, Rhombus Black.
Floor: Square Terracotta, Rhombus
Black.



Wall: Black Green, Stripes, Point, Frame
Terracotta. Floor: Black Green.

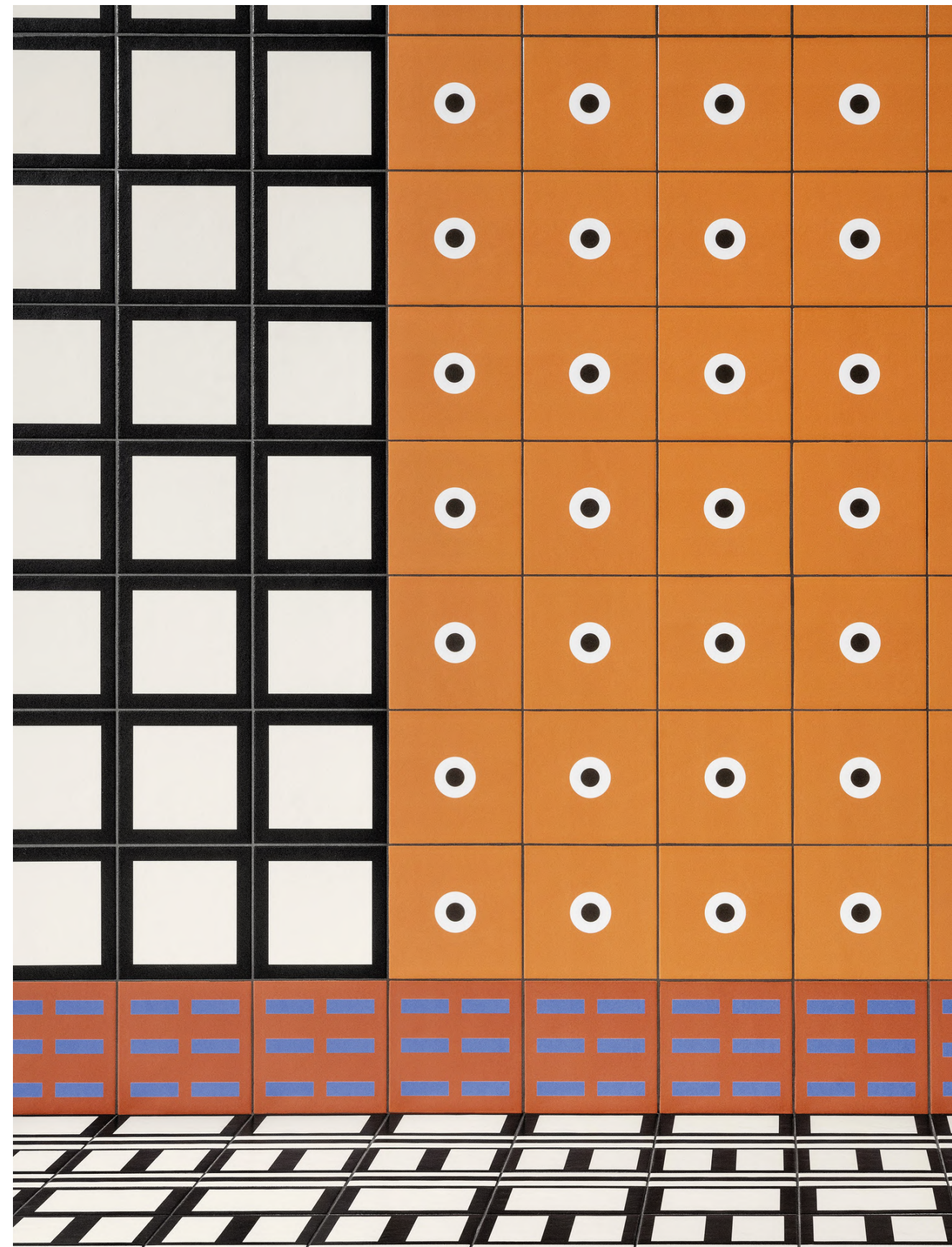


Corners

Abaco

The Mattonelle Margherita universe is composed of 41 different patterns, designed by hand: 27 graphics and 6 plain elements in the 205x205mm size, 6 patterns and 2 plain elements in the 10.1x20.5 cm size.

The two sizes are modular, with a joint of 2 mm.



Wall: Square Black, Point, Signs.
Floor: Square Black, Street, Double White.

MATTONELLE MARGHERITA

27 PATTERNS (205x205mm)



SQUARE
BLUE



SQUARE
GREEN



SQUARE
BLACK



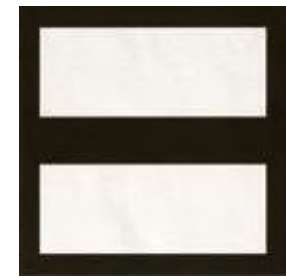
SQUARE
ORANGE



SQUARE
TERRACOTTA



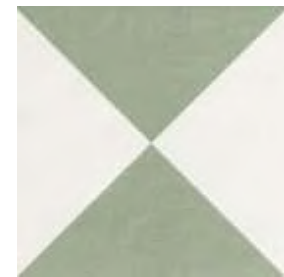
DOUBLE
BLUE



DOUBLE
WHITE



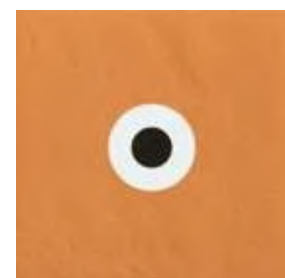
DOUBLE
RED



CONES



SCHEME



POINT



RHOMBUS
WHITE



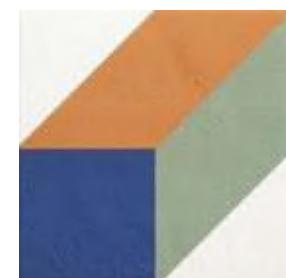
RHOMBUS
BLACK



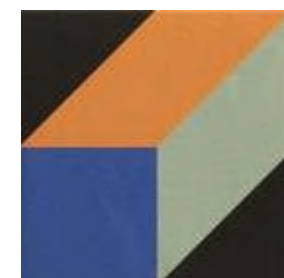
FLOWER
GREEN



FLOWER
BLACK



KITE
WHITE



KITE
BLACK



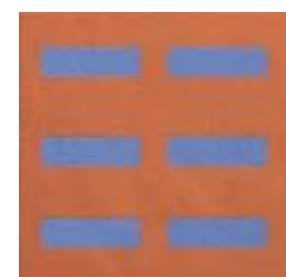
SPRING
TERRACOTTA



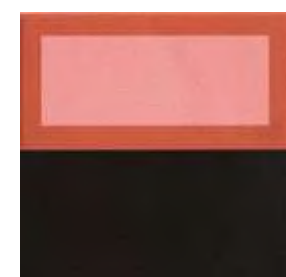
LINE



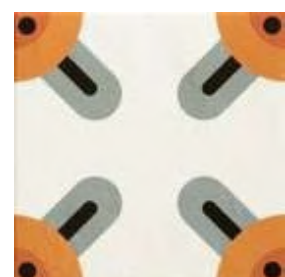
STRIPES



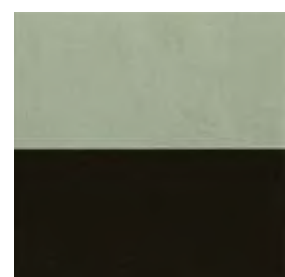
SIGNS



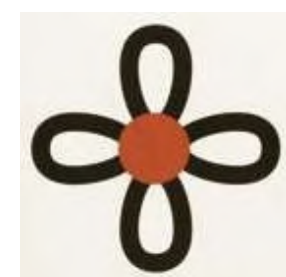
BLACK
TERRACOTTA



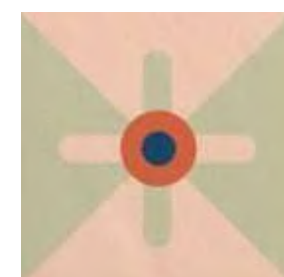
CORNERS



BLACK
GREEN



PETALS



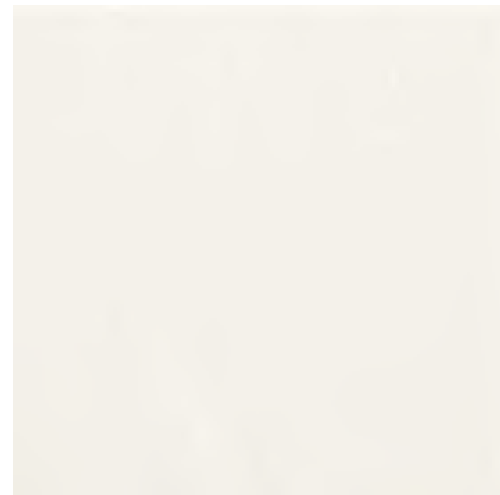
SPRING
PINK



STAR

MATTONELLE MARGHERITA

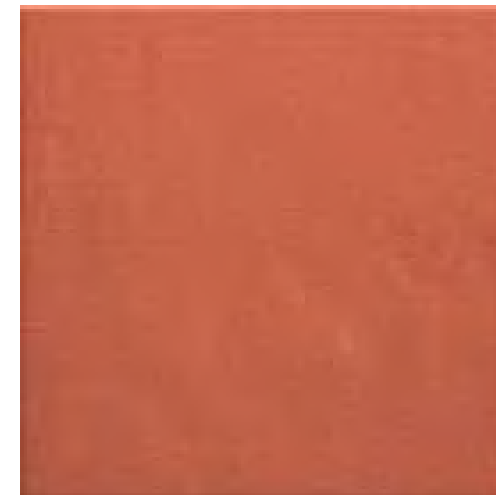
6 PLAIN COLOURS



MARGHE WHITE



MARGHE
BLACK



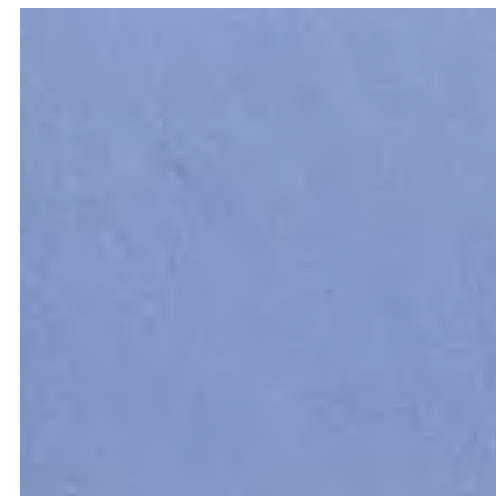
MARGHE
TERRACOTTA



MARGHE GREEN



MARGHE
BLUE



MARGHE LIGHT
BLUE

MATTONELLE MARGHERITA

8 HALF



MARGHE HALF WHITE



MARGHE HALF BLACK



FRAME BLACK



FRAME TERRACOTTA



STREET



WIRES



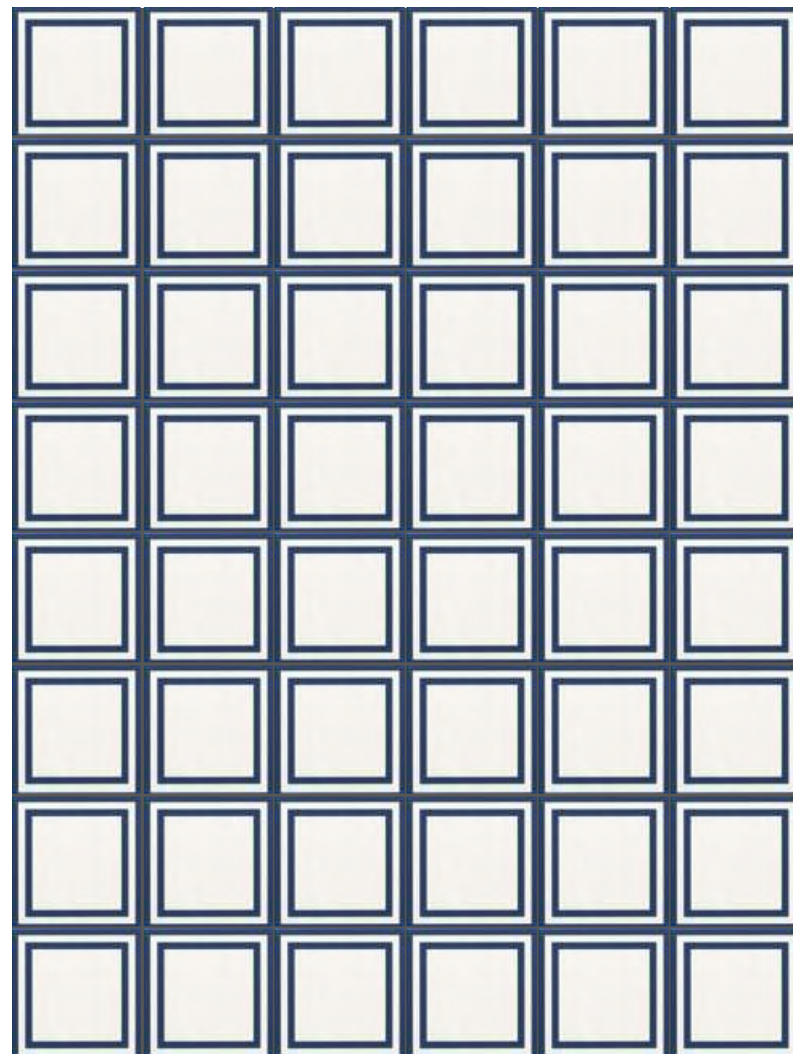
PARALLEL BLACK



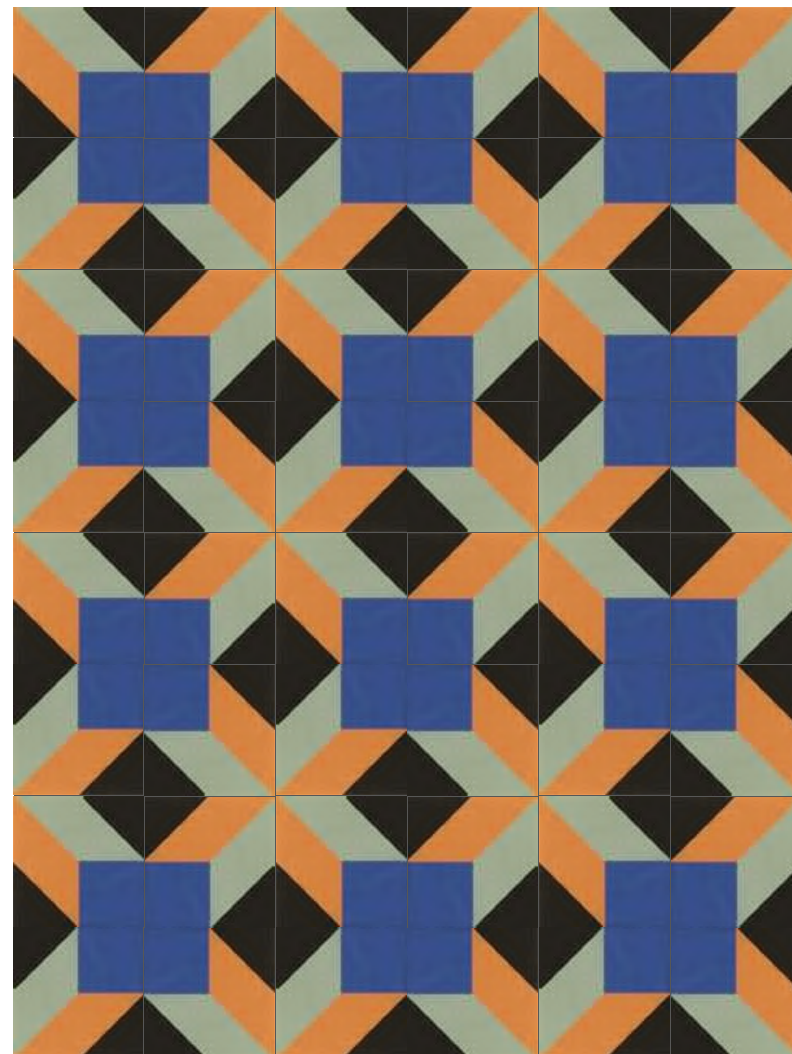
PARALLEL ORANGE

MATTONELLE MARGHERITA

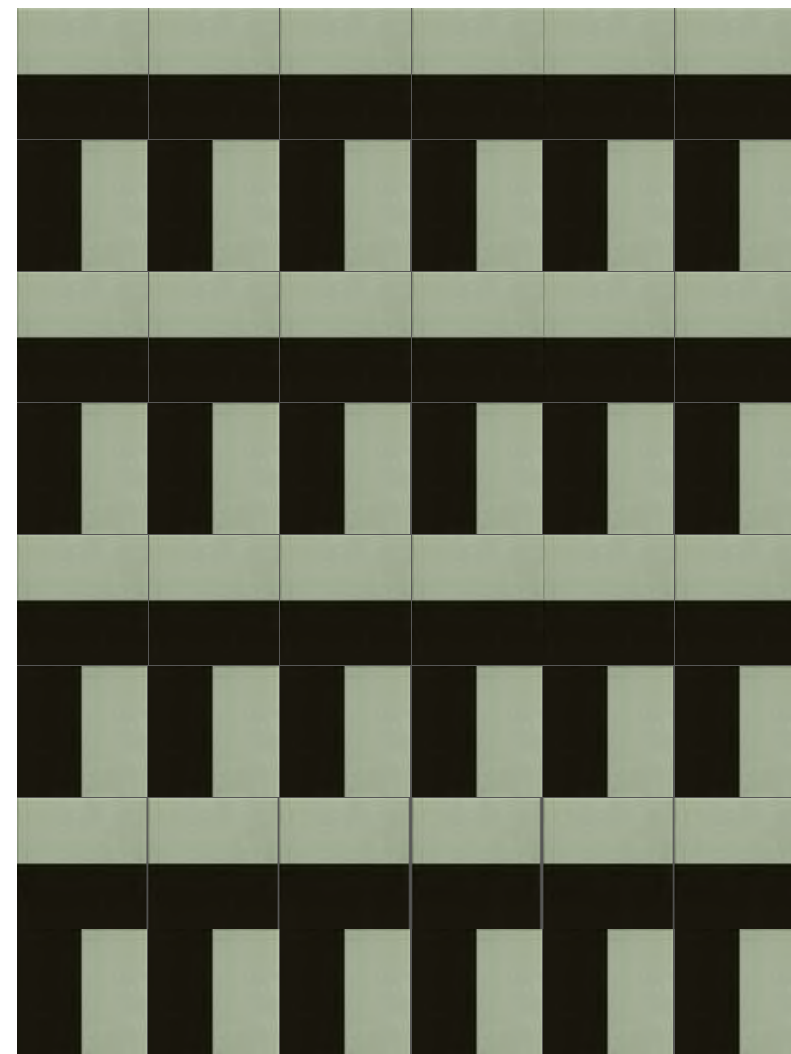
ONE TILE DESIGN



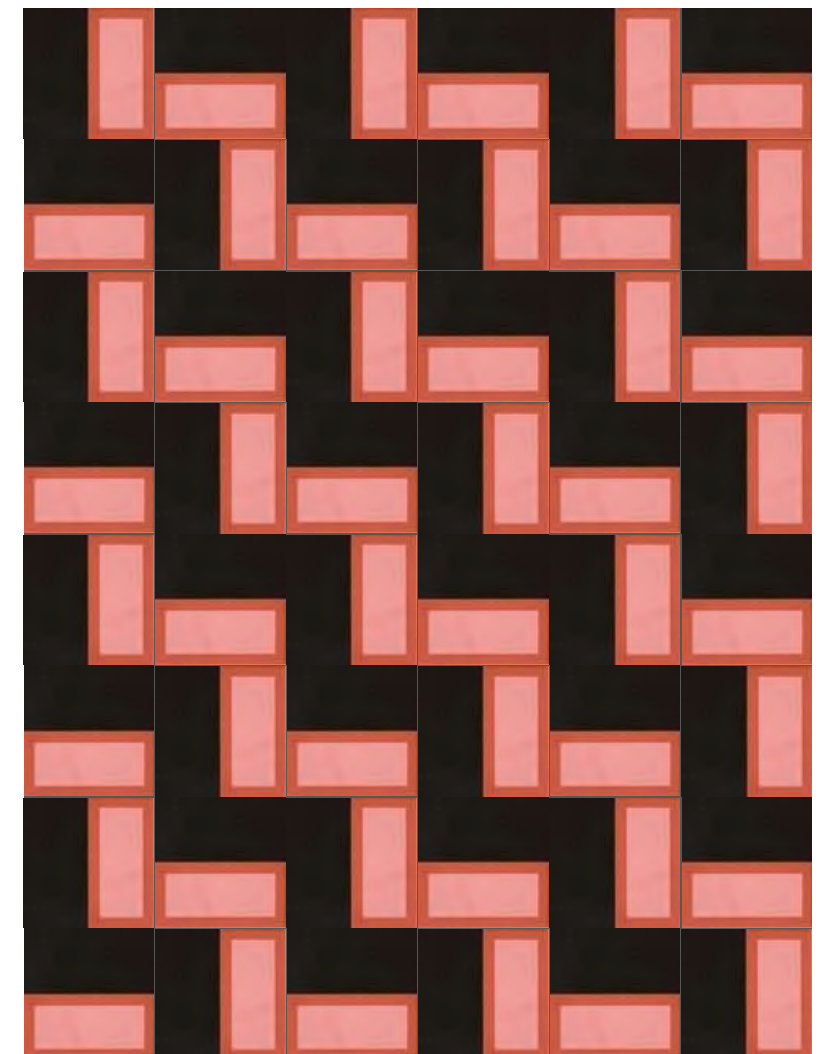
Square Blue



Kite Black



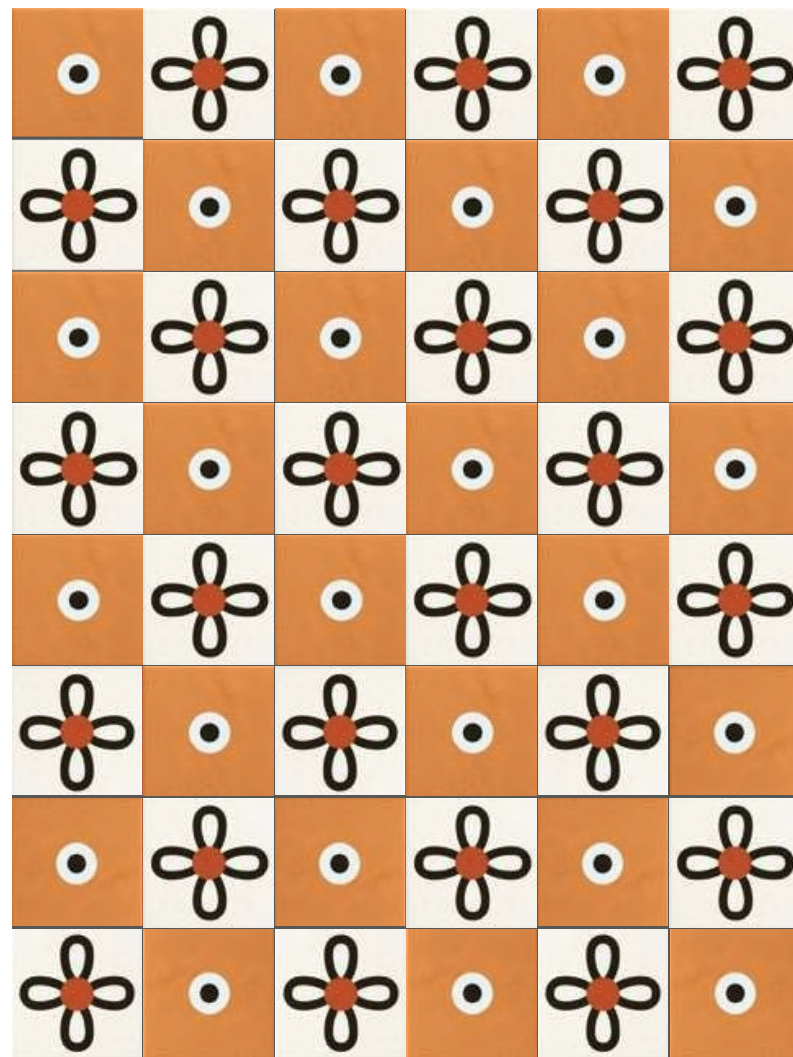
Black Green



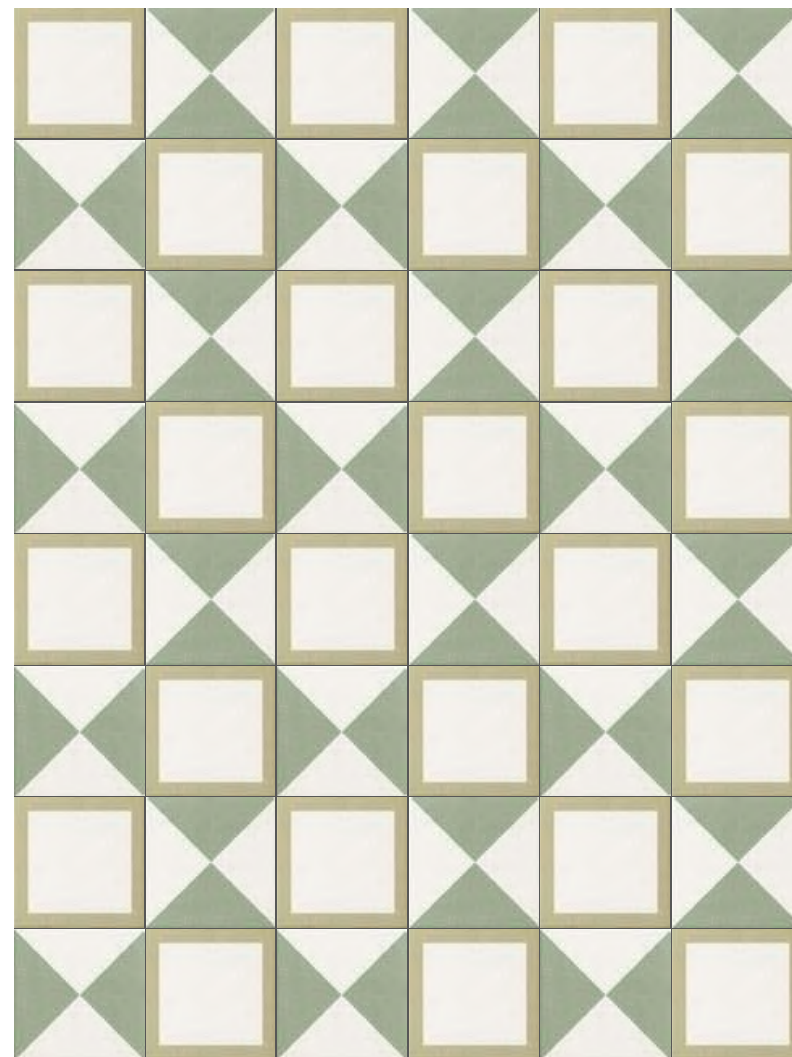
Black Terracotta

MATTONELLE MARGHERITA

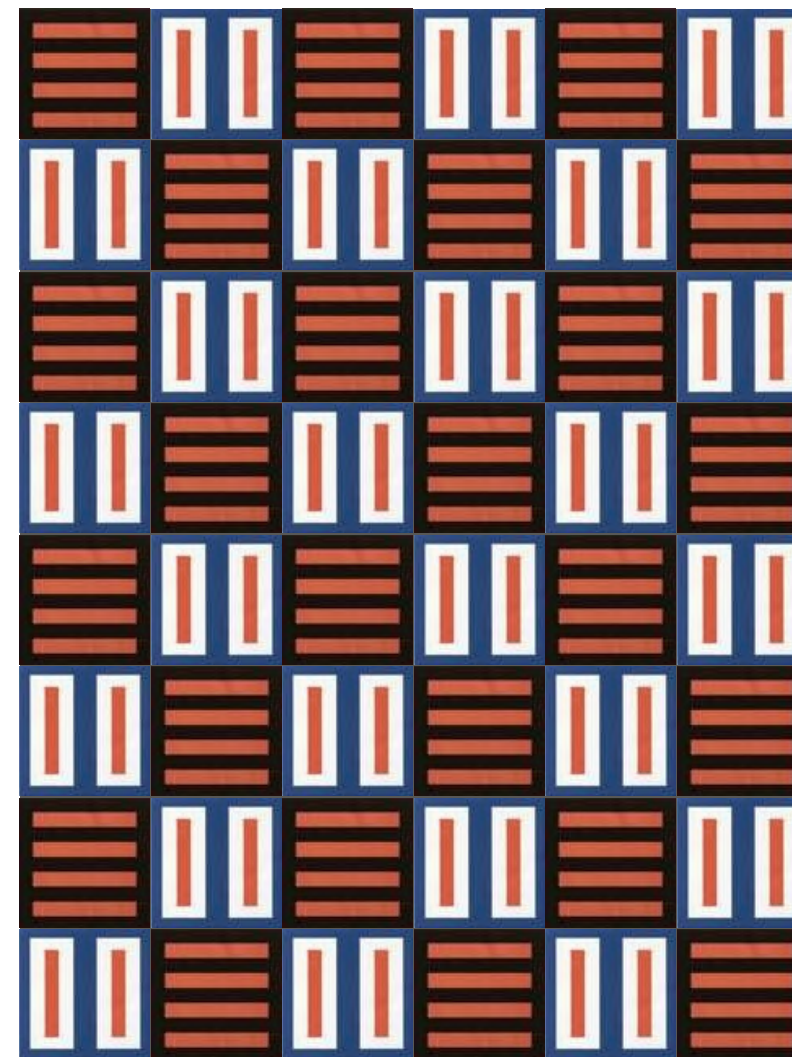
DAMIER DESIGN



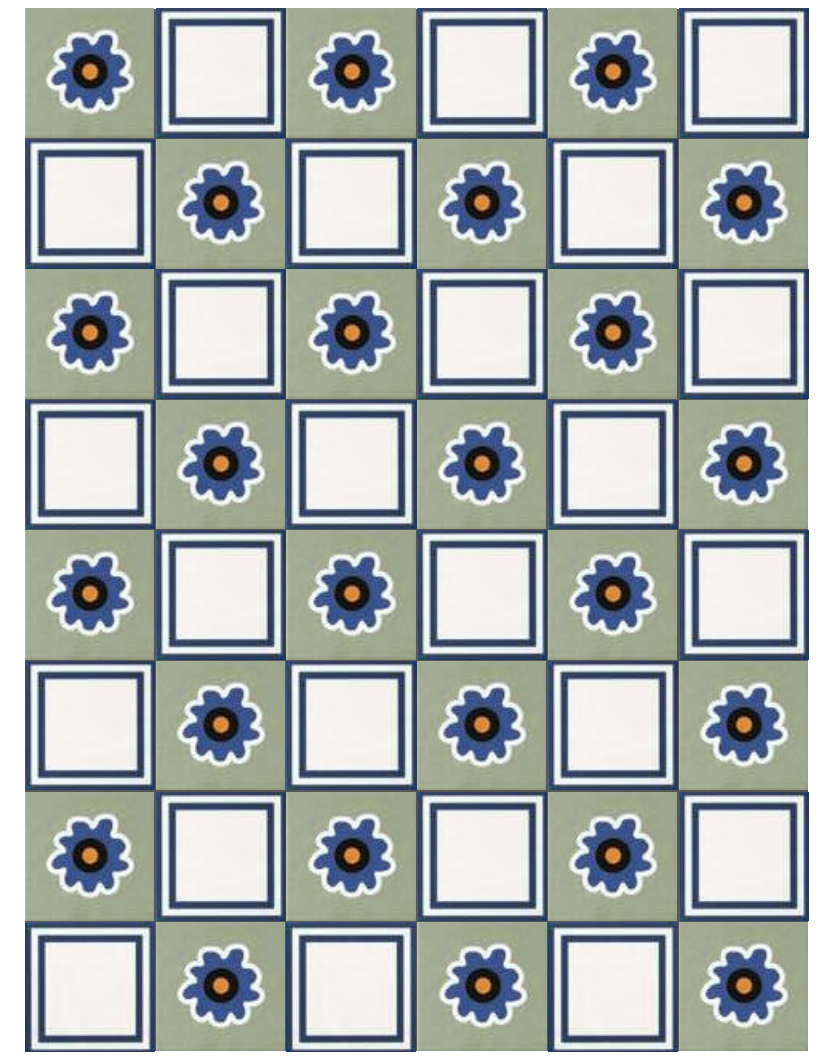
Petals, Point



Square Green, Cones



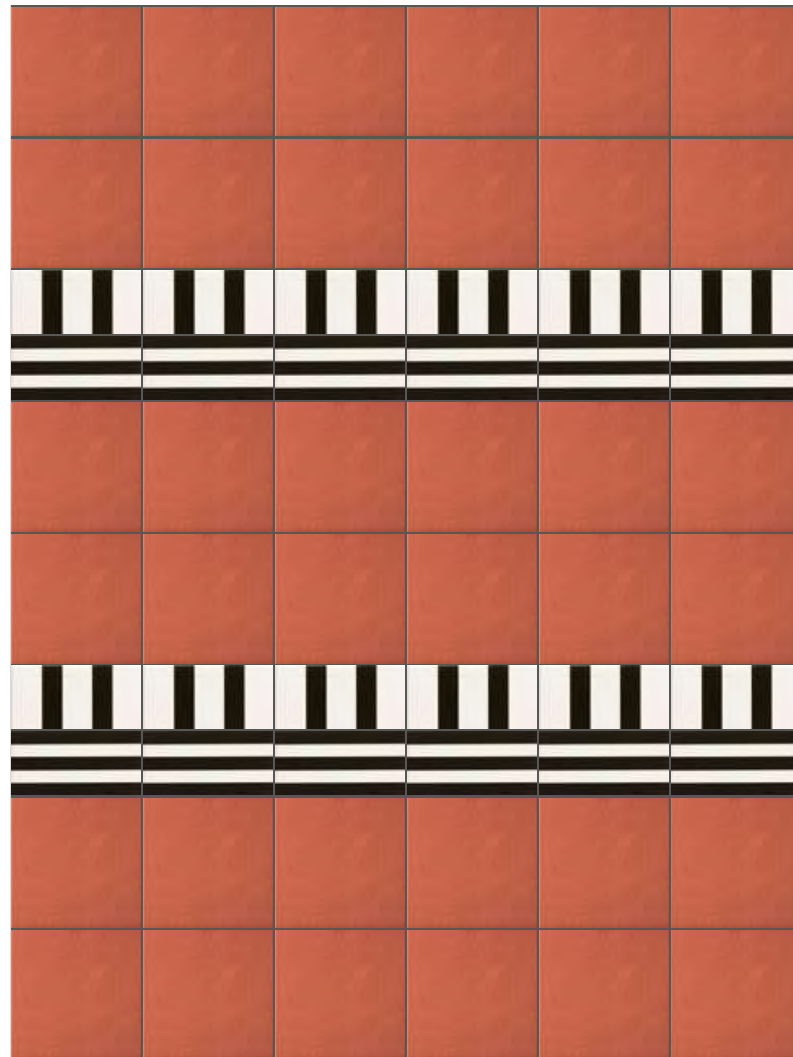
Stripes, Double Red



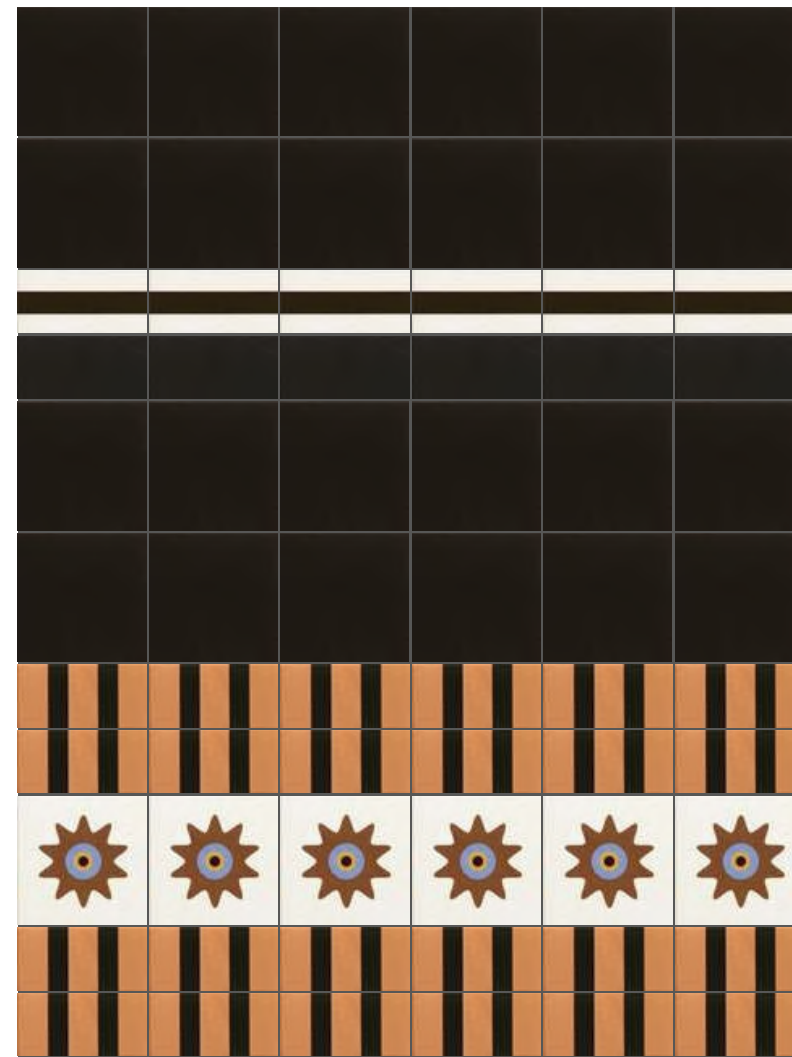
Flower Green, Square Blue

MATTONELLE MARGHERITA

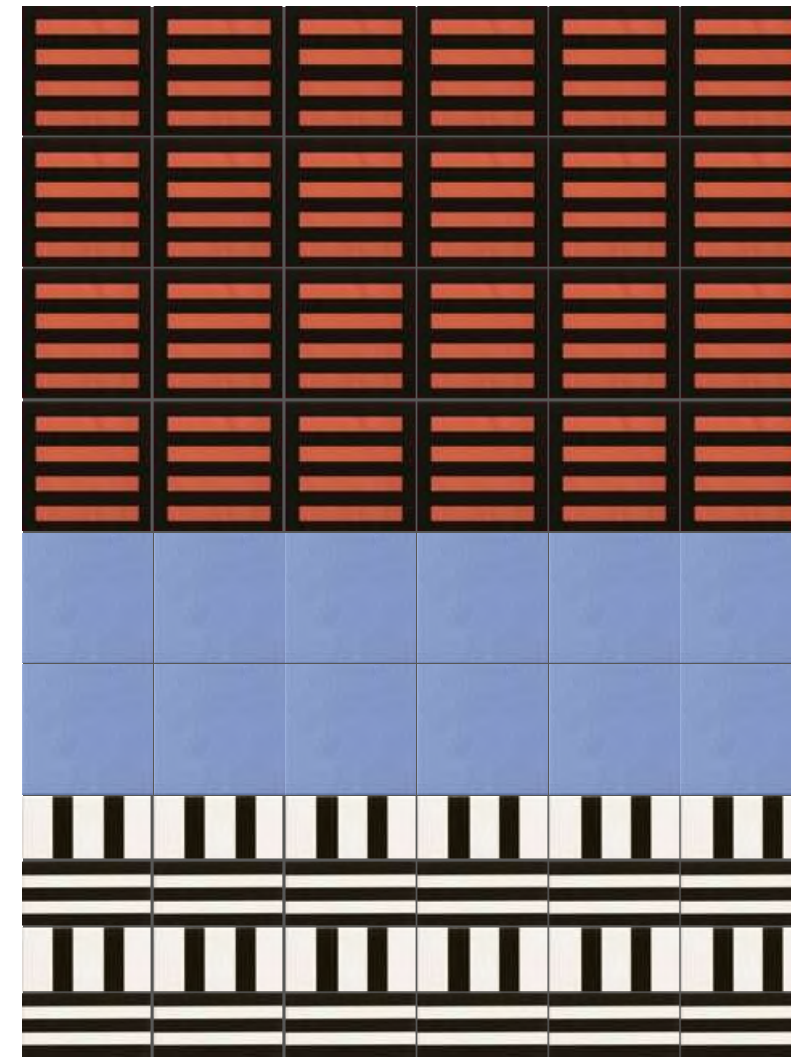
STRIPES DESIGN



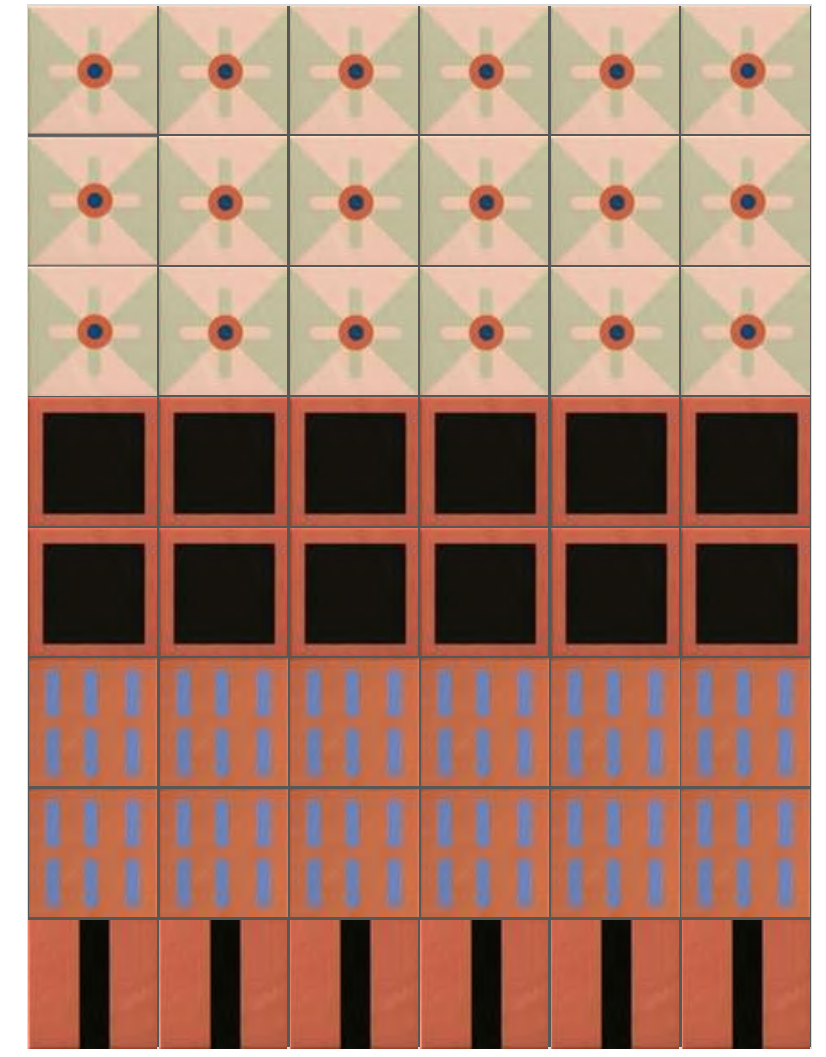
Marghe Terracotta,
Parallel Black, Wires



Marghe Black, Street, Marghe Half
Black, Parallel Orange, Star



Stripes, Marghe Light Blue,
Parallel Black, Wires



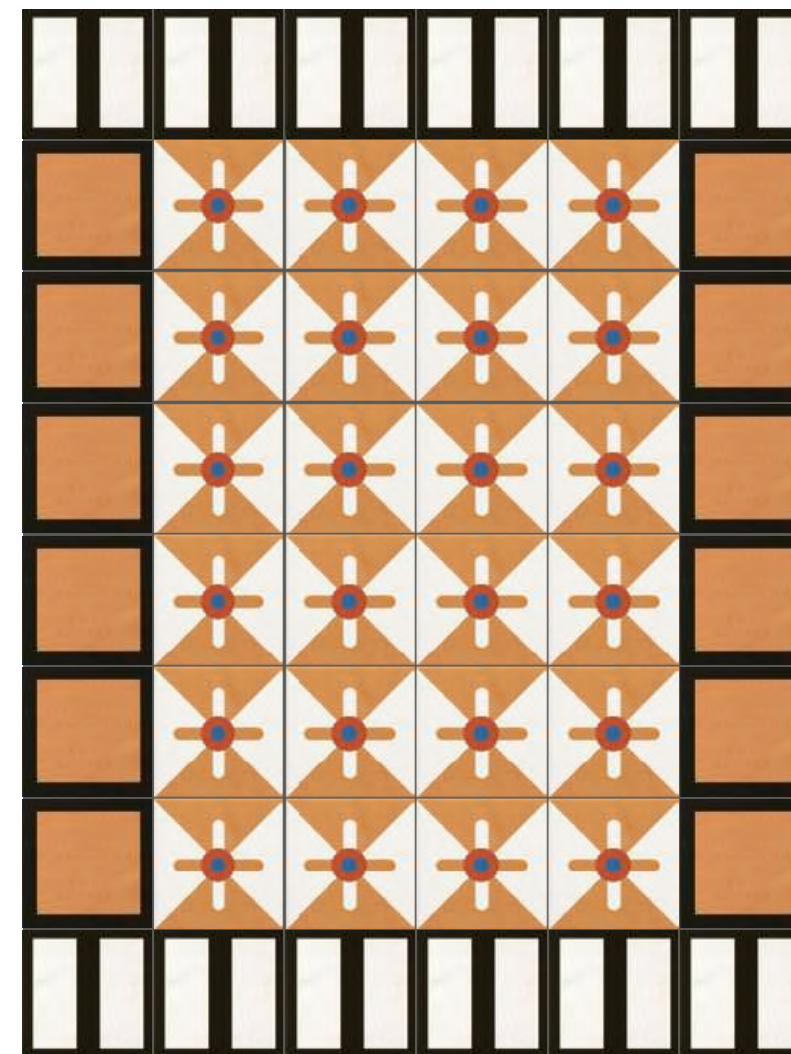
Spring Pink, Square
Terracotta, Signs, Line

MATTONELLE MARGHERITA

CARPET DESIGN



Flower Black, Rhombus
White, Stripes



Double White, Square
Orange, Spring Terracotta

MATTONELLE MARGHERITA

DOOR DESIGN



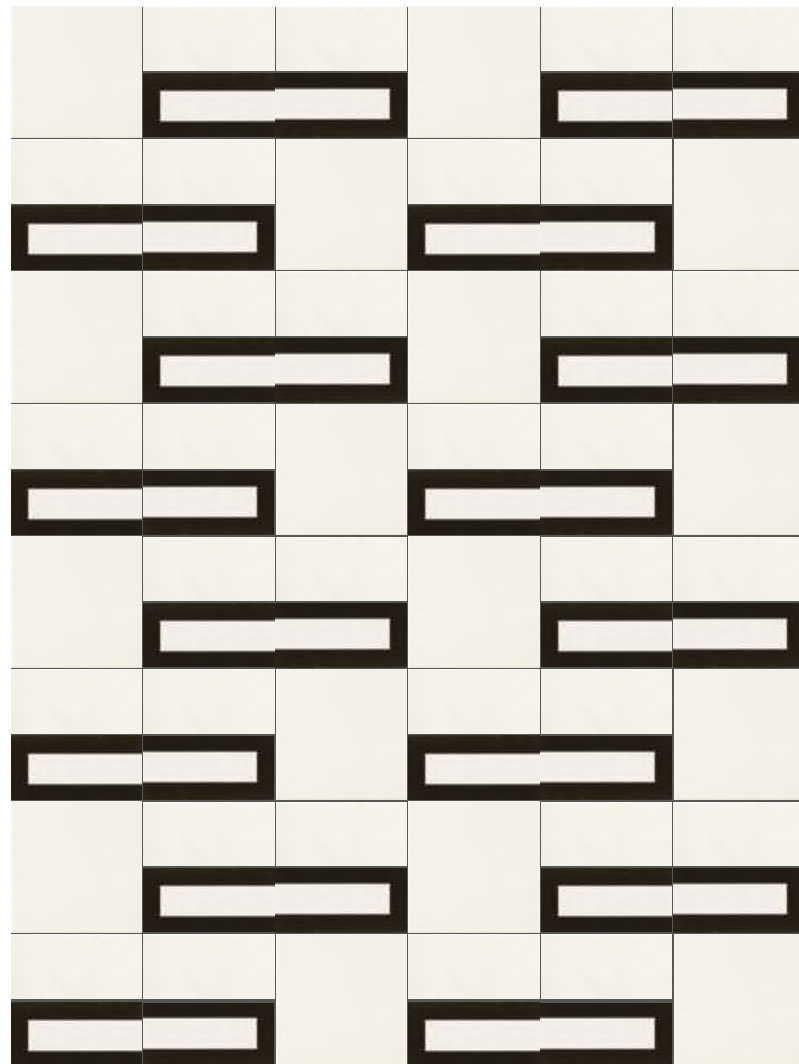
Wires, Point, Marghe
Half Black, Scheme



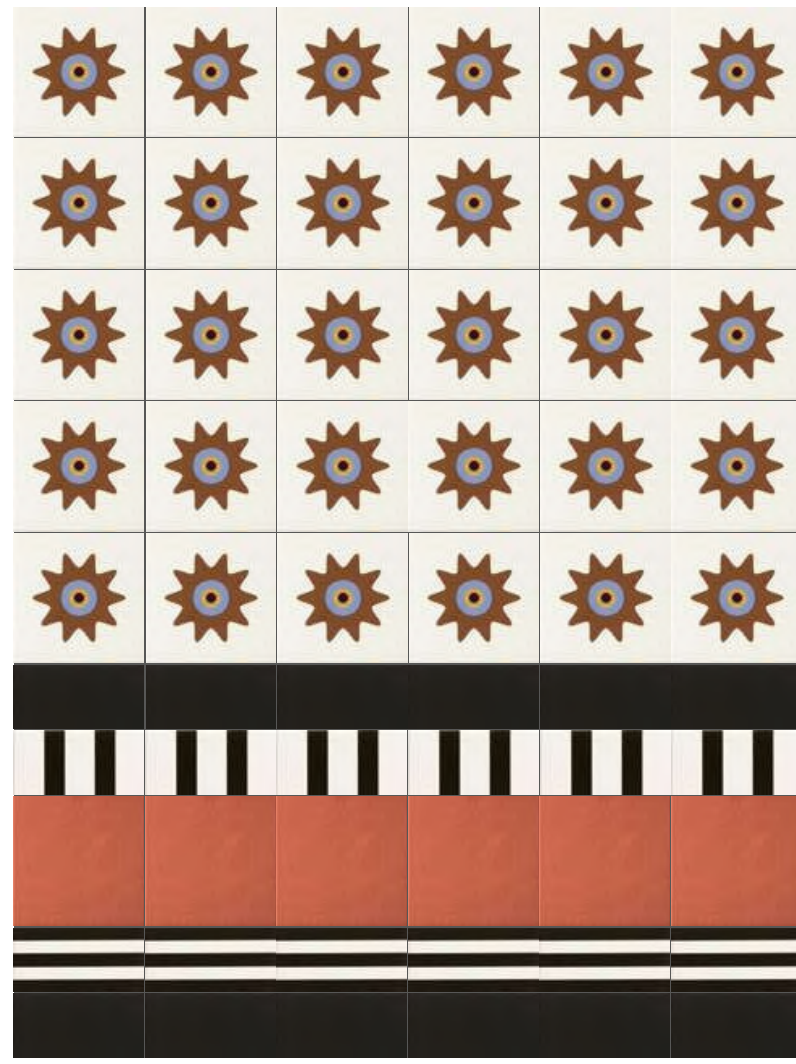
Wall: Black Green, Square Green, Line,
Marghe Half Black, Street, Flower Black,
Rhombus Black. Floor: Square Black

MATTONELLE MARGHERITA

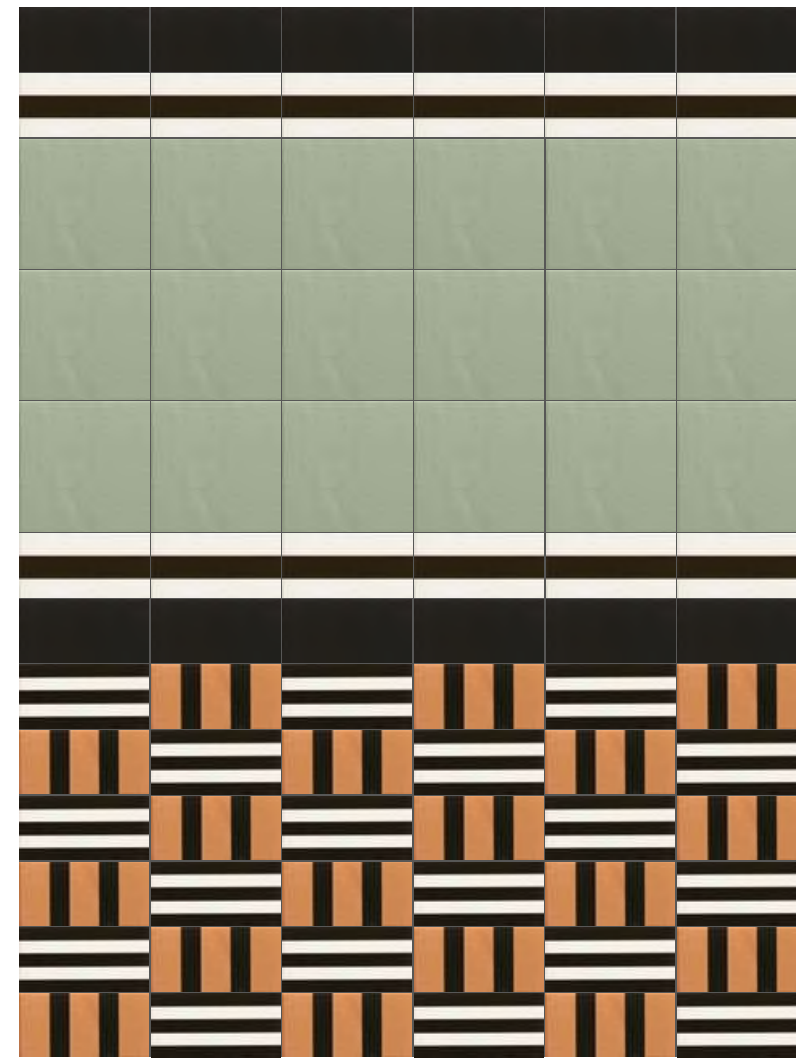
COMBINE SIZES DESIGN



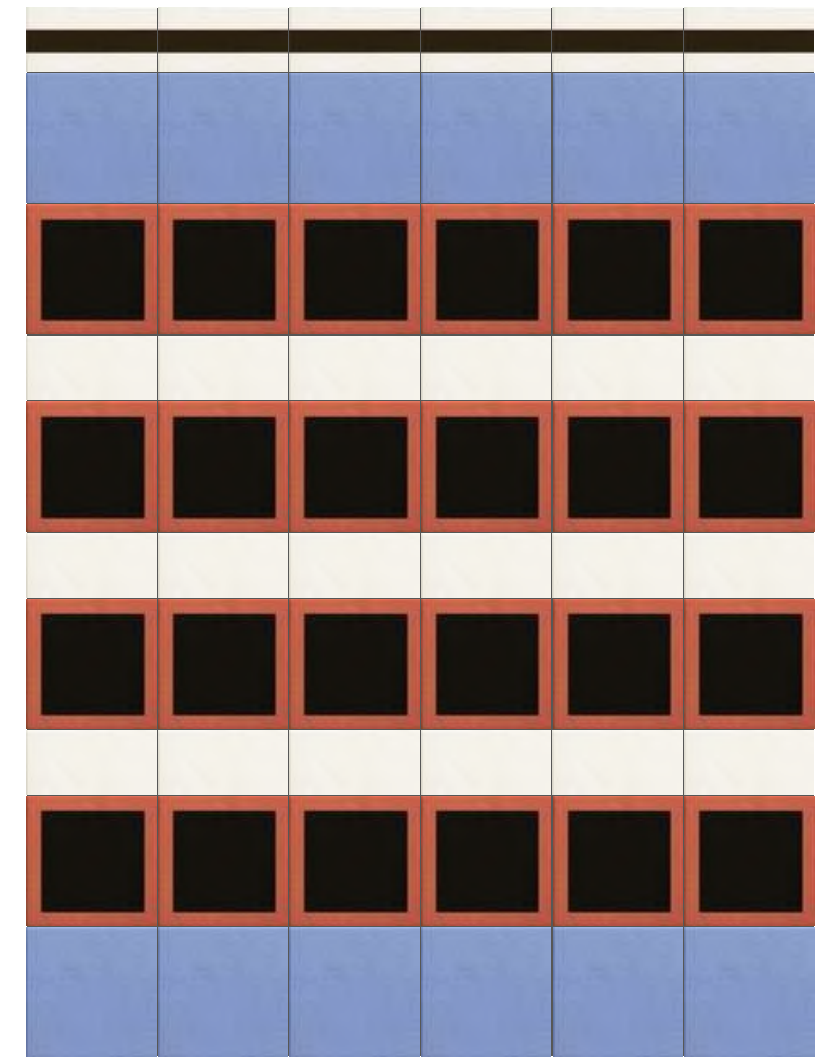
Marghe White, Marghe Half White, Frame Black



Star, Marghe Half Black, Parallel Black, Marghe Terracotta, Wires



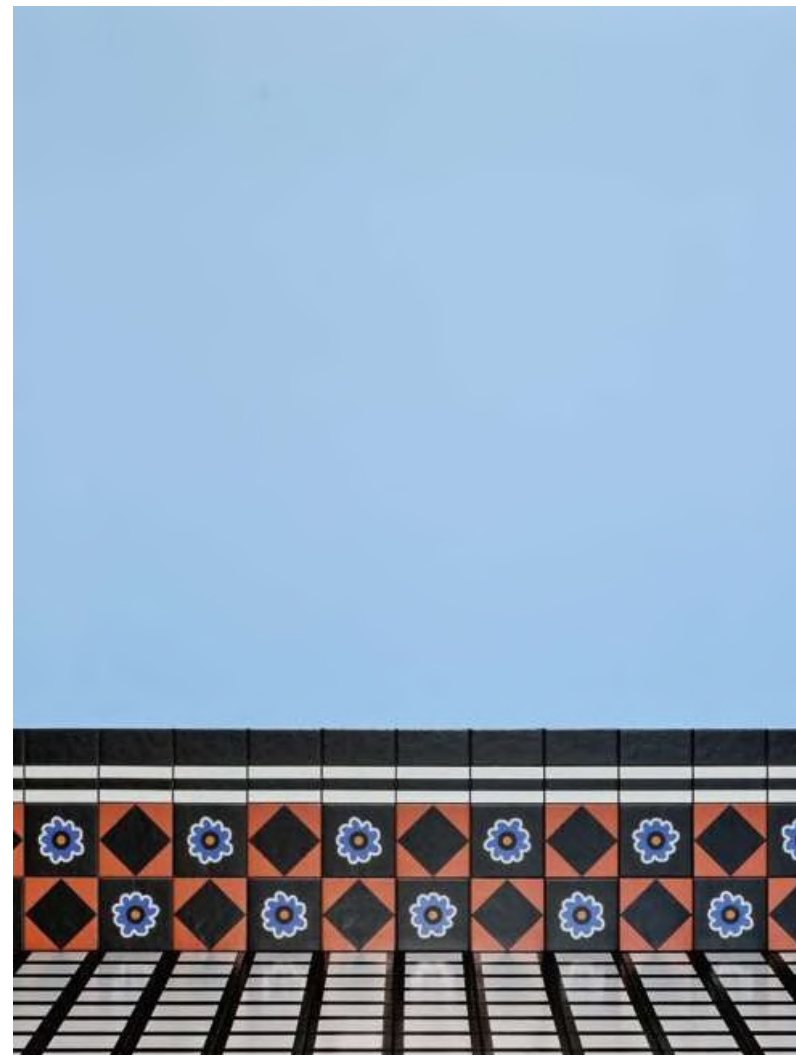
Marghe Half Black, Street, Marghe Green, Wires, Parallel Orange



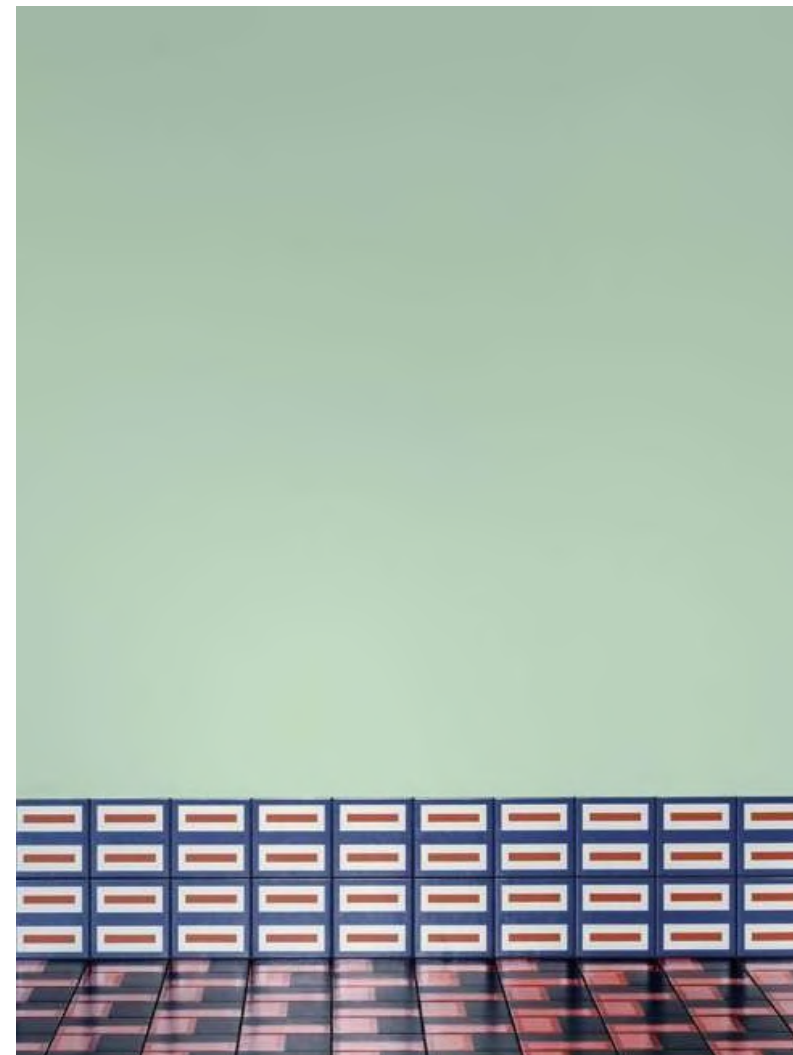
Street, Marghe Light Blue, Square Terracotta, Marghe Half White

MATTONELLE MARGHERITA

SKIRTING DESIGN



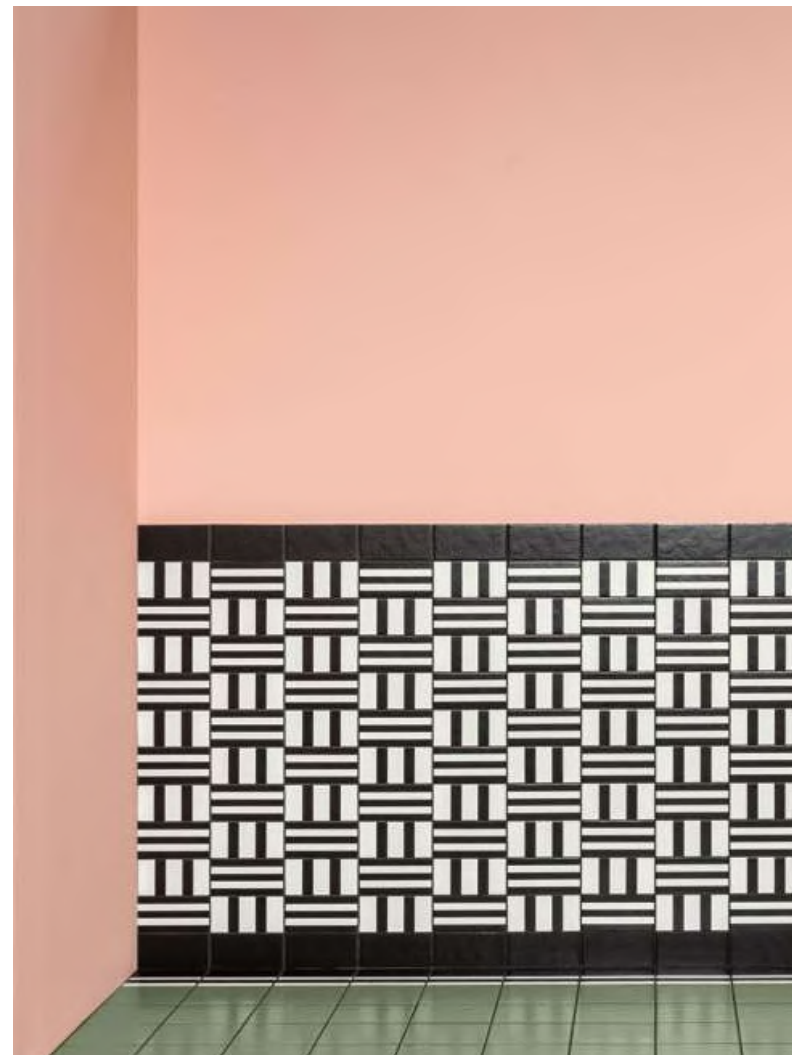
Wall: Marghe Half Black, Street,
Flower Black, Rhombus Black
Floor: Square black



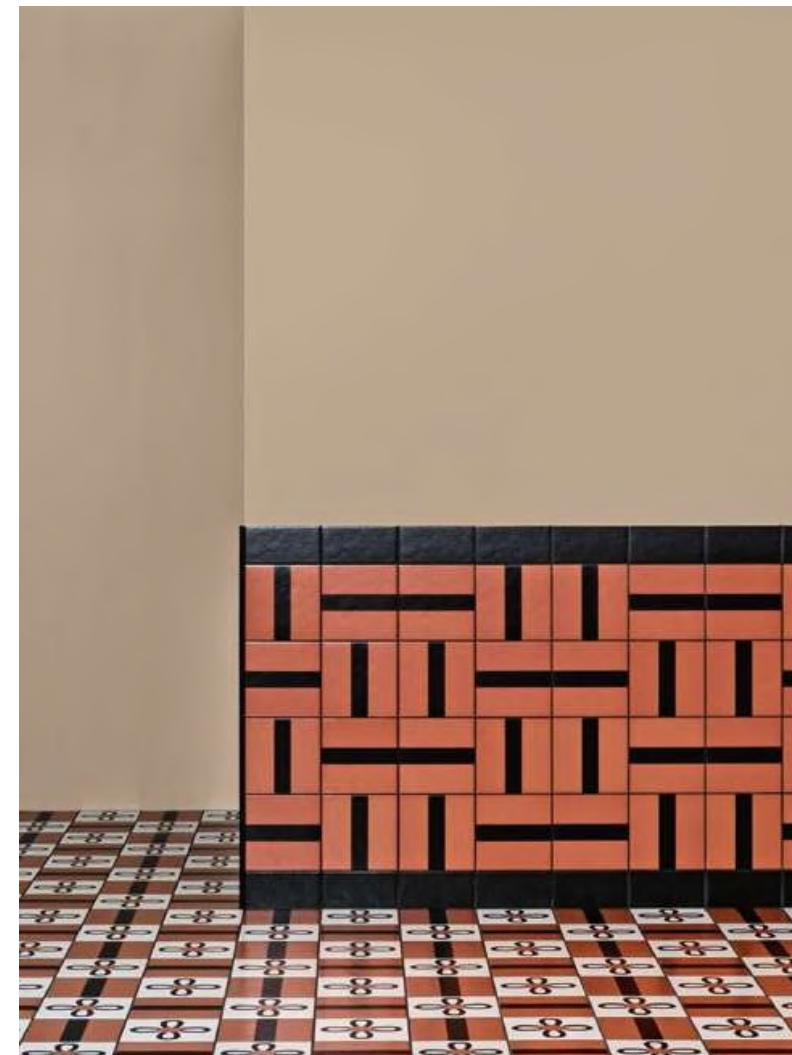
Wall: Double Red
Floor: Black Terracotta

MATTONELLE MARGHERITA

HIGH SKIRTING DESIGN



Wall: Marghe Half Black, Parallel Black, Wires.
Floor: Marghe Half Black, Street, Marghe Green



Wall: Marghe Half Black, Line.
Floor: Petals, Line

MATTONELLE MARGHERITA

TOP VIEWS



Square Black



Spring Terracotta



Double Blue, Rhombus White.



Line, Petals

MATTONELLE MARGHERITA

INFORMATION

Collection: Mattonelle Margherita

Design: Nathalie Du Pasquier, 2020

Production: Industrial

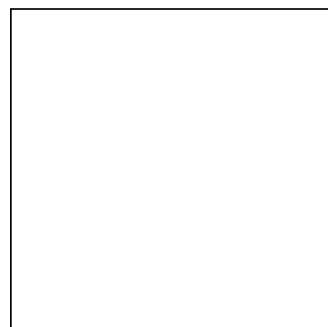
Material: Glazed porcelain stoneware

Specifications: All the tiles present a solid natural, slightly mottled effect typical of artisanal products

Anti-slip: Special treatment is available upon request, at extra charge.

Anti-slip treatment

Mattonelle Margherita tiles have a satin-finish surface that looks and feels extremely pleasant. So that the collection can be used in places that require compliance with specific anti-slip regulations, a special anti-slip finish has been developed and can be provided on request. The treatment consists of the additional application of a special glaze formula, fixed using a new firing process that leaves the surface slightly matt, maintaining its anti-slip properties over time, as well as a smooth texture that is easy to clean.



205x205mm



205x101mm

NATHALIE DU PASQUIER



French artist and designer Nathalie Du Pasquier joined the Mutina team in 2019 with the realisation of BRIC, site-specific installation exhibited on the occasion of MUT 4. She designed Brac, a series of three-dimensional elements.

Nathalie Du Pasquier was born in Bordeaux and has lived in Milano since 1979. During the eighties, she has worked as a designer, creating textiles and mostly surfaces, and was a founding member of Memphis. In 1987 painting became her main activity and ever since her practice is constantly developing in new and unexpected directions.

Her work has been featured in solo exhibitions at Kunsthalle Wien, International Center of Graphic Arts in Ljubljana, Galerie Fuer Zeitgenoessische Kunst in Leipzig, Apalazzo Gallery, Pace Gallery and at Anton Kern Gallery.

*"Tiles for all
lifestyles"*



*Please note that colours and finishes presented in the display images may vary in real life.

Showroom: 55 Glynburn Road, Glynde | (08) 8336 2366 | italiaceramics.com.au